

# National Assembly for Wales

## Unemployment Briefing December 2010

This monthly briefing paper provides a statistical overview of unemployment trends. Information is included on Assembly constituencies, Wales and UK nations and regions.



Members'  
Research  
Service

The National Assembly for Wales is the democratically elected body that represents the interests of Wales and its people, makes laws for Wales and holds the Welsh Government to account.

**The Members' Research Service is part of the National Assembly for Wales. We provide confidential and impartial research support to the Assembly's scrutiny and legislation committees, and to all 60 individual Assembly Members and their staff.**

Members' Research Service briefings are compiled for the benefit of Assembly Members and their support staff. Authors are available to discuss the contents of these papers with Members and their staff but cannot advise members of the general public. We welcome comments on our briefings; please post or email to the addresses below.

An electronic version of this paper can be found on the National Assembly's website at: [www.assemblywales.org/bus-assembly-publications-research.htm](http://www.assemblywales.org/bus-assembly-publications-research.htm)

Further hard copies of this paper can be obtained from:

Members' Research Service  
National Assembly for Wales  
Cardiff Bay  
CF99 1NA

Email: [MembersLibrary@wales.gov.uk](mailto:MembersLibrary@wales.gov.uk)

© National Assembly for Wales Commission Copyright 2010

The text of this document may be reproduced free of charge in any format or medium providing that it is reproduced accurately and not used in a misleading or derogatory context. The material must be acknowledged as copyright of the National Assembly for Wales Commission and the title of the document specified.

Enquiry no: 10/3475

# **National Assembly for Wales**

Unemployment Briefing  
December 2010

Leon Gooberman

Paper Number: 10/071



Members'  
Research  
Service



# Unemployment Briefing: December 2010

## Introduction

Unemployment statistics are published each month by the Office for National Statistics (ONS). This paper is released shortly after the ONS data and aims to provide a brief summary of the latest unemployment situation in Wales and the UK.

**Section 1 contains headline figures and analysis. Additional information is provided in sections 2 to 5.**

As well as information relating to the International Labour Organisation (ILO) and claimant count measures. This paper also includes unofficial residence-based claimant count rates for Assembly Constituencies. These are an alternative measure to those published by the ONS. Due to a slight change in methodology, the unofficial claimant count rates in this briefing are not comparable with those contained in issues previous to August 2010. Further information is available in the Technical Annex.

## 1: Headlines

### ILO unemployment <sup>1</sup>

- In August to October 2010, the ILO unemployment rate in Wales was 8.6 per cent. This compares to 8.8 per cent in August to October 2009. *Figure 2.1;*
- In August to October 2010, the number of ILO unemployed in Wales was 125,000. This has increased by 4,000 since the previous quarter and was unchanged since the previous year;
- The male ILO rate was 10.2 per cent, compared to 6.8 per cent for females. *Figure 2.1;*
- The ILO rate in Wales was the second highest of the four UK nations. *Table 3.1;* and
- Wales had the sixth highest ILO rate of the twelve UK nations and regions. *Figure 4.1.*

### Claimant count <sup>2</sup>

- In November 2010, the total claimant count rate in Wales was 5.0 per cent. This compares to 5.7 per cent in November 2009. *Figure 2.2;*
- The claimant count total in Wales was unchanged since the previous month and decreased by 9,300 since the previous November;
- At 6.5 per cent, Northern Ireland had the highest claimant count rate out of the UK nations. Wales had the second highest rate. *Table 3.2;*
- In November 2010, Wales' claimant count rate was ranked joint fifth highest out of the twelve UK nations and regions. *Figure 4.2;* and
- The Assembly Constituencies with the highest claimant count rates (based on unofficial estimates) were Blaenau Gwent (10.0 per cent) and Merthyr Tydfil and Rhymney (9.7 per cent). The lowest claimant count rate estimates were in Montgomeryshire (2.6 per cent), Brecon and Radnorshire (2.8 per cent) and Ceredigion (2.8 per cent). *Table 5.2.*

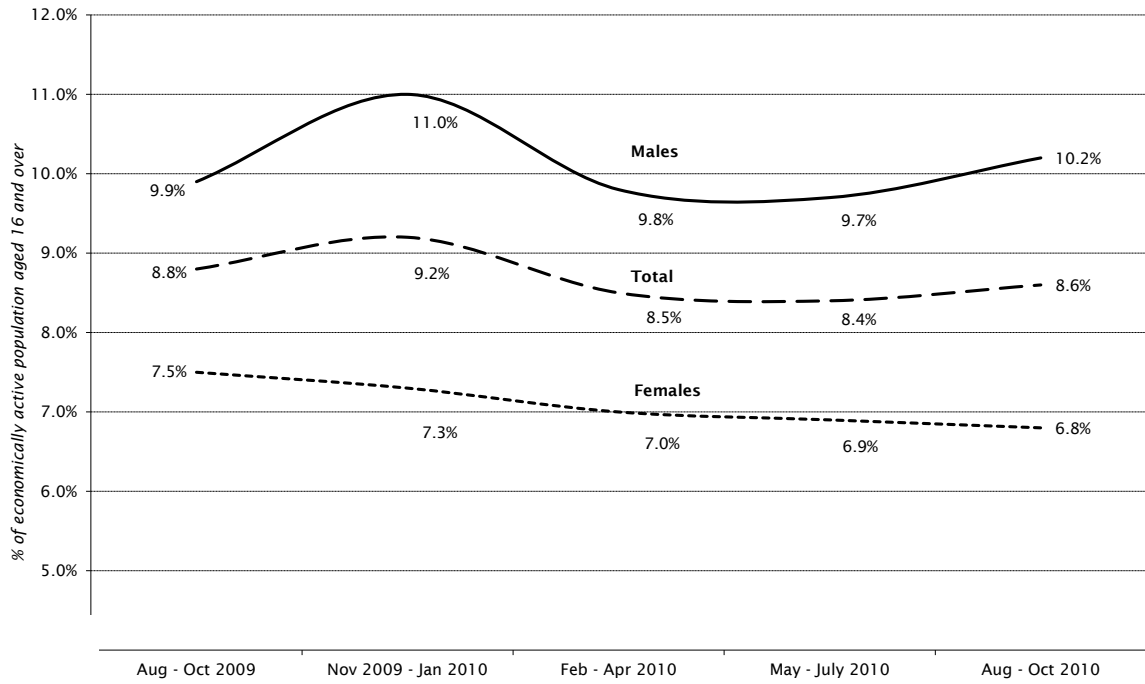
---

<sup>1</sup> The **International Labour Organisation (ILO)** unemployment rate is the number of ILO unemployed persons as a percentage of the economically active population aged 16 and over. It includes those who are out of work and want a job, have actively sought work in the last four weeks and are available to start work in the next two weeks; plus those who are out of work, have found a job and are waiting to start in the next two weeks. It is derived from a household survey carried out by the Office for National Statistics each quarter and is the primary measure of unemployment.

<sup>2</sup> The **claimant count** measures only those people who are claiming Jobseeker's Allowance. It is lower than the ILO definition, because some unemployed people are either not entitled to claim benefits, or choose not to do so. Rates for Assembly Constituencies are unofficial estimates produced by the Members' Research Service (see the Technical Annex).

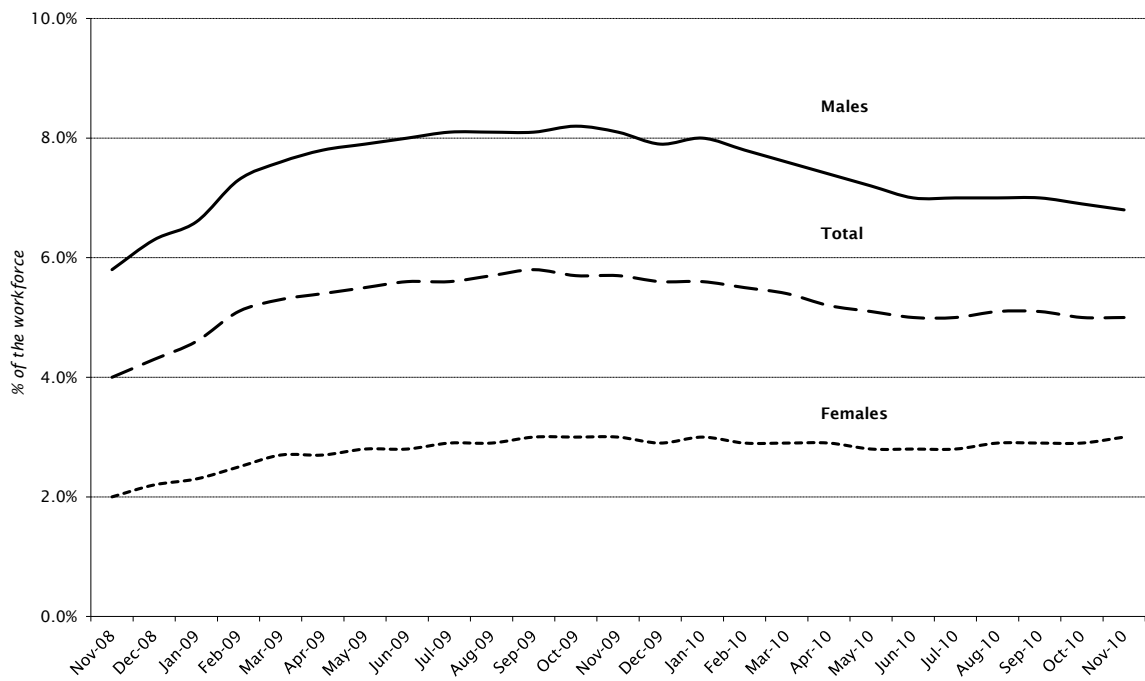
## 2: Unemployment statistics for Wales <sup>3</sup>

Figure 2.1: ILO unemployment rates



Source: Office for National Statistics

Figure 2.2: Claimant count rates



Source: Office for National Statistics

<sup>3</sup> See Technical Annex for definitions of unemployment data used in this paper.

### 3: Unemployment statistics for UK nations

Table 3.1: ILO unemployment rates

August to October	Wales	England	Scotland	Northern Ireland	UK
2010	8.6	7.8	8.7	7.6	7.9
2009	8.8	8.0	7.0	6.6	7.9
2008	6.7	6.1	5.2	4.5	6.0

Source: Office for National Statistics/ Stats Wales

Table 3.2: Claimant count rates

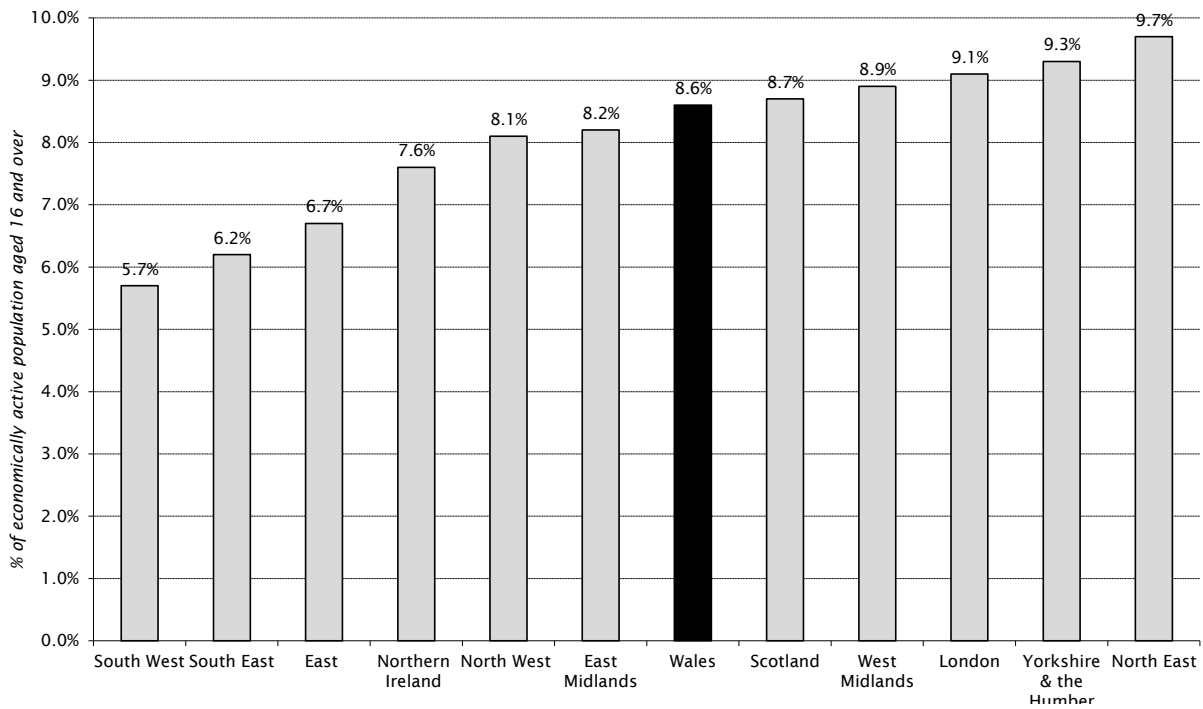
November	Wales	England	Scotland	Northern Ireland	UK
2010	5.0	4.4	4.9	6.5	4.5
2009	5.7	4.9	4.9	6.0	5.0
2008	4.0	3.4	3.4	3.9	3.4

Source: Office for National Statistics/ Stats Wales



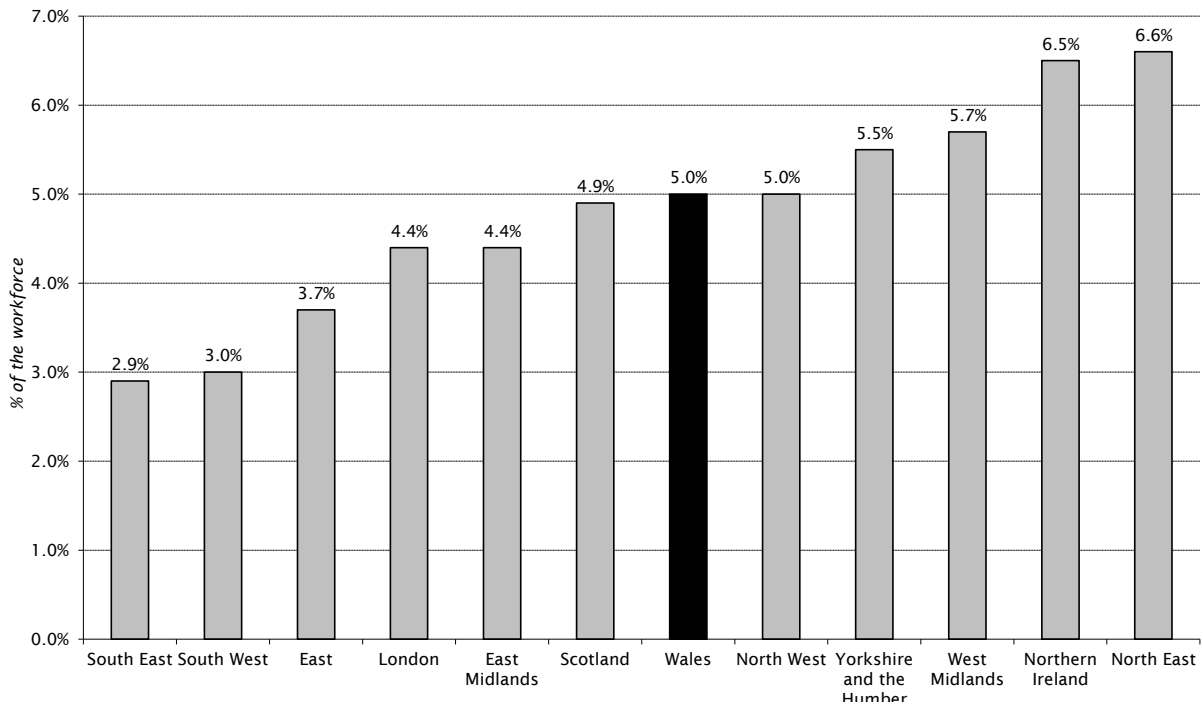
#### 4: Unemployment statistics for UK nations and regions

Figure 4.1: ILO unemployment rates (August - October 2010)



Source: Office for National Statistics

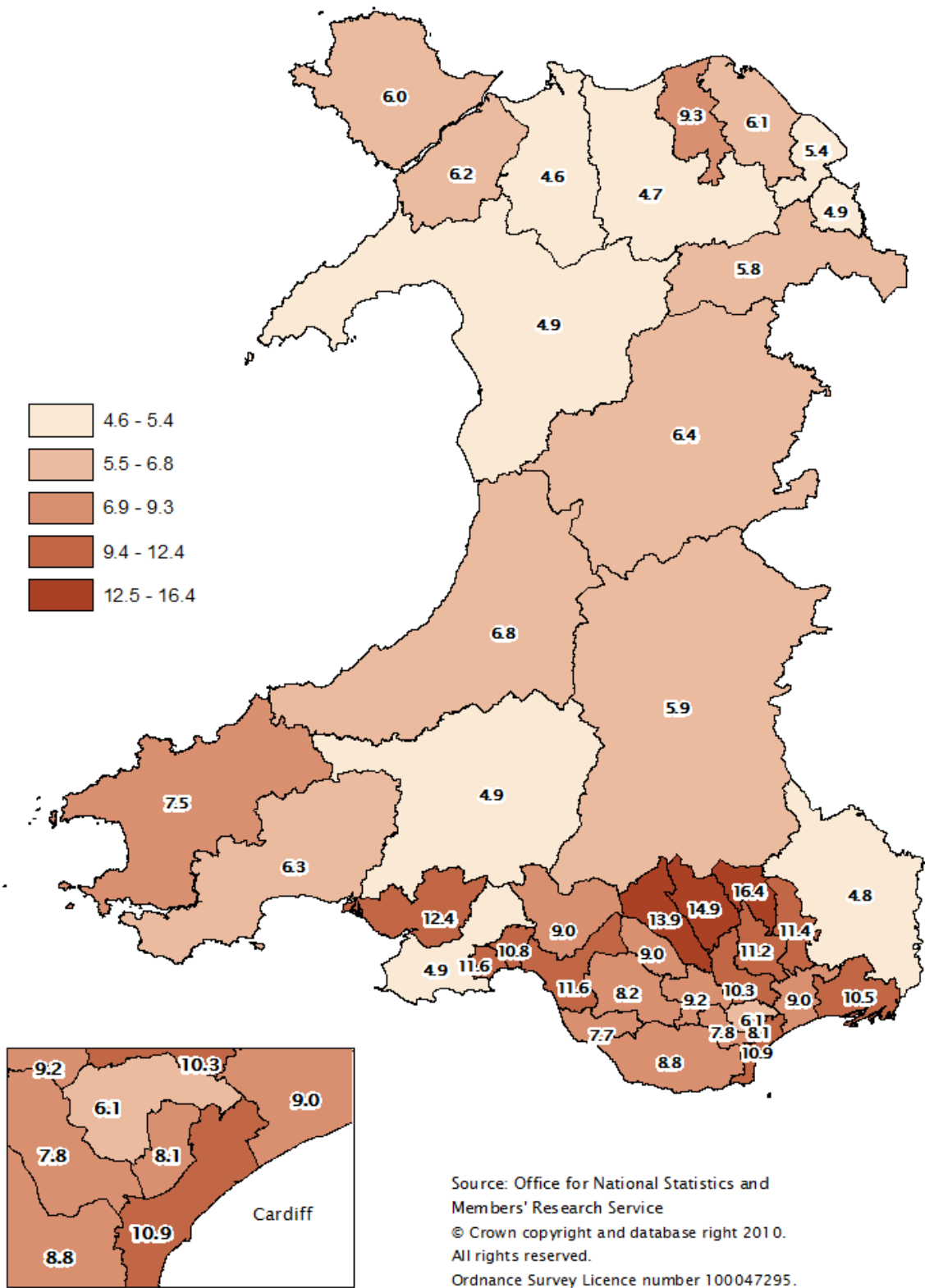
Figure 4.2: Claimant count rates (November 2010)



Source: Office for National Statistics

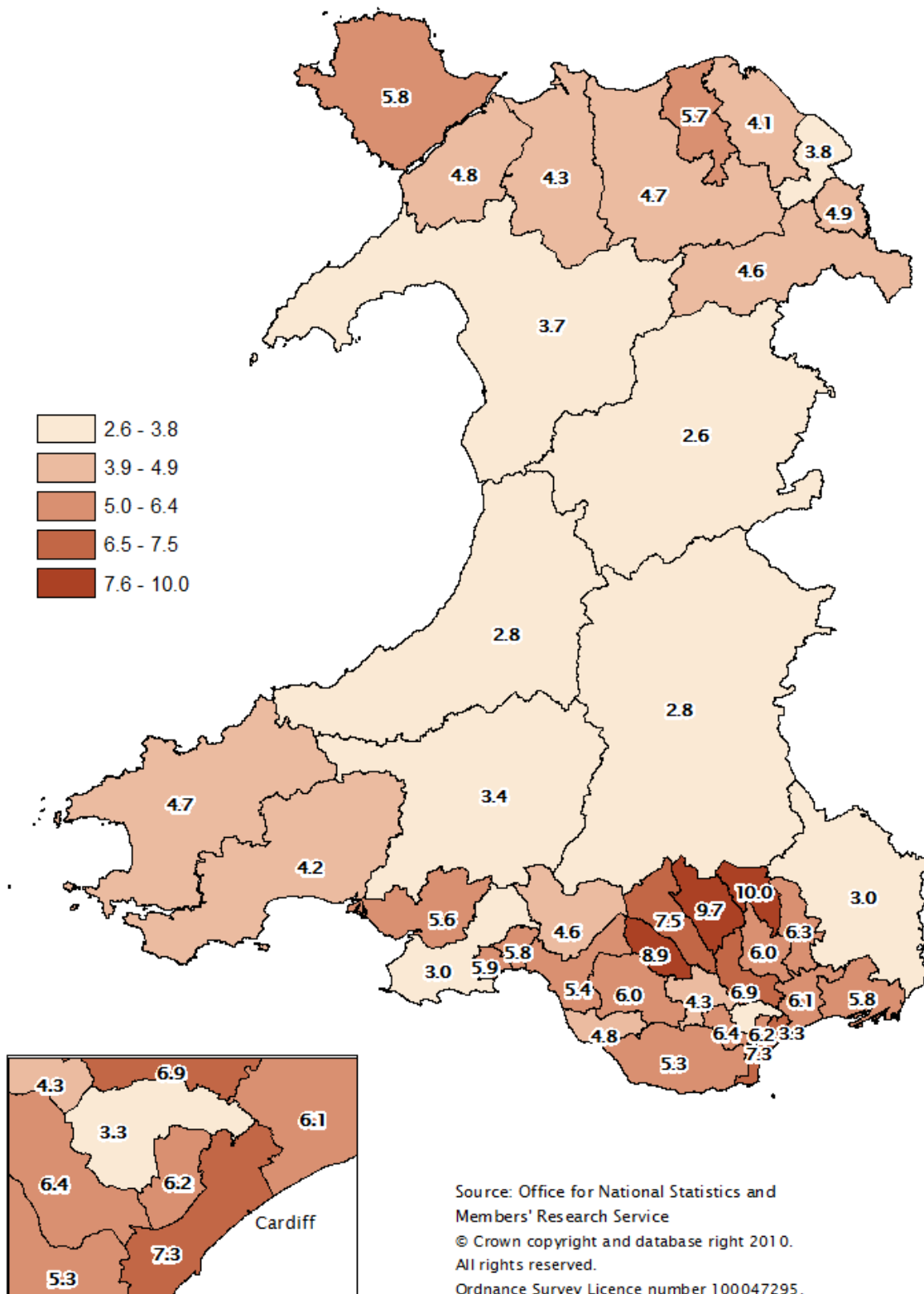
## 5: Unemployment statistics for Assembly constituencies

Map 5.1: ILO unemployment rates by Assembly constituency (April 2009 to March 2010)<sup>4</sup>



<sup>4</sup> Latest available data (not seasonally adjusted). The rate is the number of ILO unemployed persons as a percentage of the economically active population aged 16 and over.

Map 5.2: Unofficial claimant count rates by Assembly Constituency, November 2010 <sup>5</sup>



<sup>5</sup> Source: Members' Research Service. Claimants of Job Seekers Allowance as a **percentage** of the economically active population aged between 16 and 64. See technical annex for details.

**Table 5.1 Claimant count by Assembly Constituency, November 2010**

*not seasonally adjusted*

<b>Constituency</b>	<b>Men</b>	<b>Women</b>	<b>People</b>
Aberavon	993	389	1,382
Aberconwy	763	258	1,021
Alyn and Deeside	1,032	479	1,511
Arfon	914	306	1,220
Blaenau Gwent	1,966	802	2,768
Brecon and Radnorshire	600	267	867
Bridgend	1,178	459	1,637
Caerphilly	1,766	732	2,498
Cardiff Central	1,737	599	2,336
Cardiff North	1,010	395	1,405
Cardiff South and Penarth	2,441	933	3,374
Cardiff West	1,844	734	2,578
Carmarthen East and Dinefwr	693	310	1,003
Carmarthen West and South Pembrokeshire	982	360	1,342
Ceredigion	635	276	911
Clwyd South	1,075	427	1,502
Clwyd West	1,049	373	1,422
Cynon Valley	1,438	627	2,065
Delyn	960	401	1,361
Dwyfor Meirionnydd	646	288	934
Gower	681	328	1,009
Islwyn	1,351	539	1,890
Llanelli	1,280	498	1,778
Merthyr Tydfil and Rhymney	1,944	749	2,693
Monmouth	726	355	1,081
Montgomeryshire	516	256	772
Neath	971	415	1,386
Newport East	1,429	533	1,962
Newport West	1,630	665	2,295
Ogmore	1,399	526	1,925
Pontypridd	1,154	414	1,568
Preseli Pembrokeshire	1,085	388	1,473
Rhondda	1,675	687	2,362
Swansea East	1,444	522	1,966
Swansea West	1,349	454	1,803
Torfaen	1,606	622	2,228
Vale of Clwyd	1,330	462	1,792
Vale of Glamorgan	1,748	633	2,381
Wrexham	1,157	445	1,602
Ynys Mon	1,200	471	1,671

Source: Office for National Statistics

**Table 5.2: Unofficial residence-based claimant count rates by Assembly Constituency, November 2010 (a)**

*not seasonally adjusted*

Constituency	Men	Women	People
Aberavon	7.0	3.4	5.4
Aberconwy	5.9	2.3	4.3
Alyn and Deeside	4.7	2.6	3.8
Arfon	6.6	2.6	4.8
Blaenau Gwent	12.9	6.4	10.0
Brecon and Radnorshire	3.6	1.9	2.8
Bridgend	6.4	3.0	4.8
Caerphilly	8.9	4.4	6.9
Cardiff Central	8.5	3.5	6.2
Cardiff North	4.5	2.0	3.3
Cardiff South and Penarth	9.8	4.4	7.3
Cardiff West	8.6	3.9	6.4
Carmarthen East and Dinefwr	4.4	2.3	3.4
Carmarthen West and South Pembrokeshire	5.7	2.4	4.2
Ceredigion	3.6	1.9	2.8
Clwyd South	5.9	2.9	4.6
Clwyd West	6.4	2.7	4.7
Cynon Valley	9.7	5.0	7.5
Delyn	5.3	2.7	4.1
Dwyfor Meirionnydd	4.6	2.6	3.7
Gower	3.7	2.1	3.0
Islwyn	7.8	3.8	6.0
Llanelli	7.5	3.4	5.6
Merthyr Tydfil and Rhymney	12.7	6.0	9.7
Monmouth	3.7	2.2	3.0
Montgomeryshire	3.1	1.9	2.6
Neath	5.8	3.0	4.6
Newport East	7.6	3.5	5.8
Newport West	8.0	3.8	6.1
Ogmore	7.8	3.7	6.0
Pontypridd	5.9	2.4	4.3
Preseli Pembrokeshire	6.3	2.8	4.7
Rhondda	11.3	5.9	8.9
Swansea East	7.8	3.4	5.8
Swansea West	8.0	3.3	5.9
Torfaen	8.3	3.8	6.3
Vale of Clwyd	7.9	3.1	5.7
Vale of Glamorgan	7.2	3.0	5.3
Wrexham	6.5	3.0	4.9
Ynys Mon	7.6	3.6	5.8

Source: Members' Research Service

(a) Claimants of Job Seekers Allowance as a percentage of the economically active population aged 16 to 64. See technical annex for details.

## Technical Annex: Definitions of unemployment data

### ILO unemployment

*Definition:* ILO (International Labour Organisation) unemployment is the number of those who are out of work and want a job, have actively sought work in the last four weeks and are available to start in the next two weeks; plus those who are out of work, have found a job and are waiting to start in the next two weeks.

*Methodology used for calculating rates:* ILO rates are calculated as a percentage of the population aged 16 and over who are economically active. Economically active people are those who are either in work or are unemployed under the ILO definition.

*Source:* The number of ILO unemployed is derived from the Labour Force Survey (LFS). The LFS is a sample survey of around 60,000 UK households carried out by the Office for National Statistics (ONS). The ONS states that quarter on quarter changes at regional level are particularly subject to sampling variability and **should be interpreted in the context of changes over several quarters rather than in isolation**. The figures have also been adjusted by ONS to take account of seasonal factors.

*Geographical availability:* The sample based nature of the LFS means that data for areas within Wales (such as Assembly Constituencies and local authorities) is not available on a rolling three-monthly basis. Data for Assembly Constituencies is only available on a rolling twelve-monthly basis, updated once a quarter.

*Usage:* ILO unemployment is now the headline unemployment indicator for the UK. It is a more encompassing measure of unemployment than the claimant count and enables international comparison of rates. The definition is used by most other countries, as well as Eurostat (the Statistical Office of the European Union), and the OECD (Organisation for Economic Co-operation and Development).

## Claimant Count

*Definition:* The claimant count measures the number of people who are claiming Jobseekers Allowance.

*Methodology used for calculating rates:* Two methods have been used in this paper;

1. Workplace based rates. These rates have been calculated as the number of claimants resident in each area as a percentage of workforce jobs plus the claimant count. This approach is used for all figures and tables apart from those containing figures for Assembly Constituencies; and
2. Unofficial claimant count rates. The UK Parliamentary Constituencies introduced for the 2010 general election are the **same** as Assembly Constituencies. Claimant count **proportions for constituencies** are available from the Office for National Statistics (ONS). The ONS claimant count proportions use the population aged 16 to 64 as a denominator and so take no account of differences between areas in the proportion that are economically active.

Claimant count **rates for Assembly Constituencies** have been calculated by the Members' Research Service, expressing the number of claimants as a percentage of the economically active population aged 16 to 64 who are resident in the constituency. This produces an alternative measure of unemployment to those published by the ONS. The proportion of economically active residents in each constituency is derived from the 2001 Census of Population and then applied to the 2008 resident population estimates of the number aged 16-64, as produced by the ONS.

This is a change from the methodology used from May to July 2010, when the number of claimants was expressed as a percentage of the economically active residents **of working age** derived from the 2001 census and the 2008 population estimates. Prior to May 2010, the number of claimants was expressed as a percentage of economically active residents aged 16 and over, derived exclusively from the 2001 Census of Population. These changes are in line with new methodologies adopted by the House of Commons Library.

*Source:* The claimant count comes from the administrative records of Jobcentre Plus. It is always lower than the ILO measure of unemployment because some unemployed people are either not entitled to claim Jobseekers allowance, or choose not to do so. The figures have also been adjusted by ONS to take account of seasonal factors (apart from those shown in Maps 5.1 and 5.2, and Tables 5.1 and 5.2).

*Geographical availability:* It is available across a broad of smaller administrative areas, including Assembly constituencies and wards.

*Usage:* Although it only provides a partial picture, the greater coverage and timeliness of the claimant count is useful to maintain a picture of the labour market at a local level.