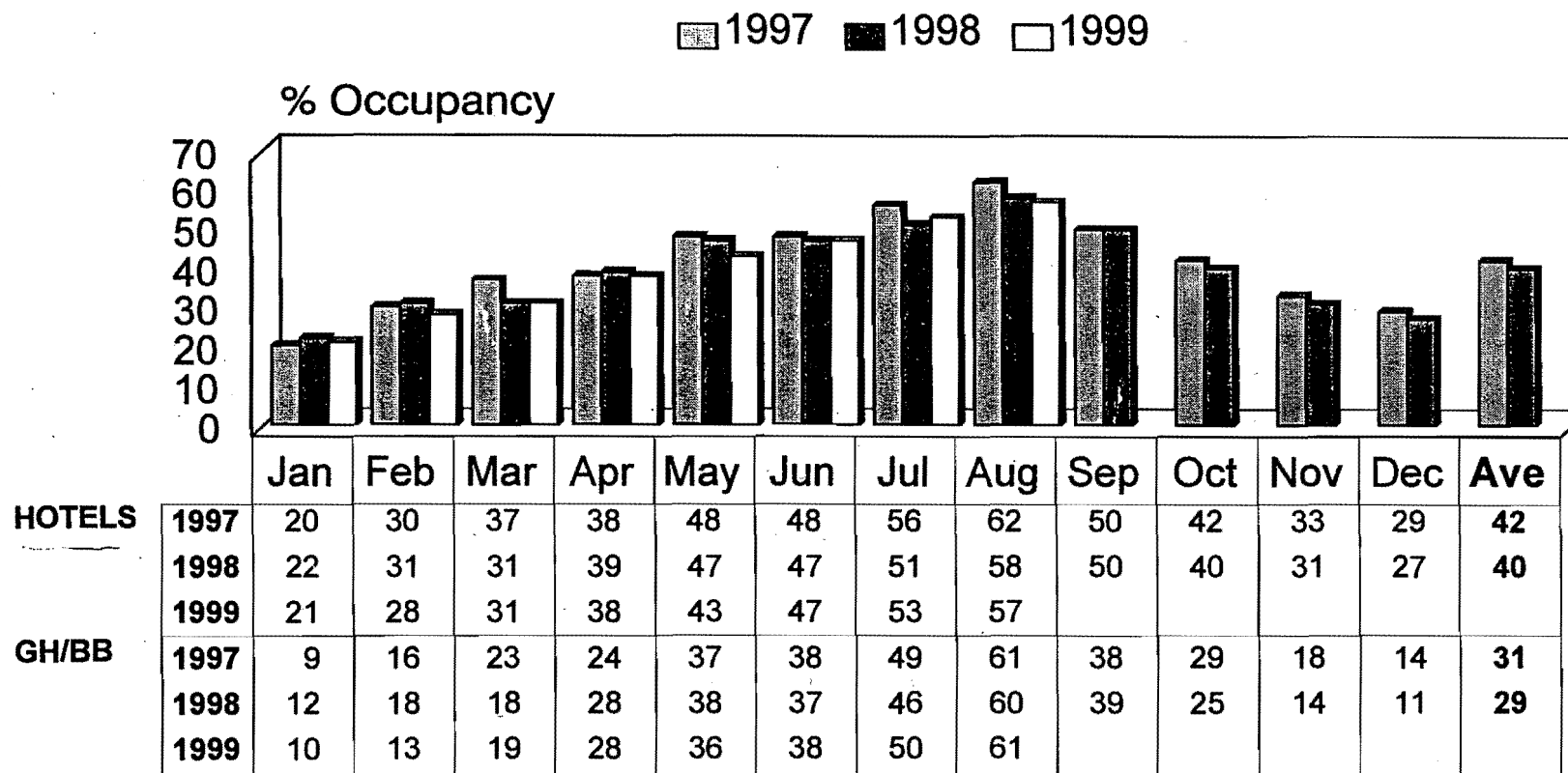


Figure 1: Serviced Accommodation Bedspace Occupancy in Wales
1997 - 1999



Source: WTB Serviced Accommodation Occupancy Survey

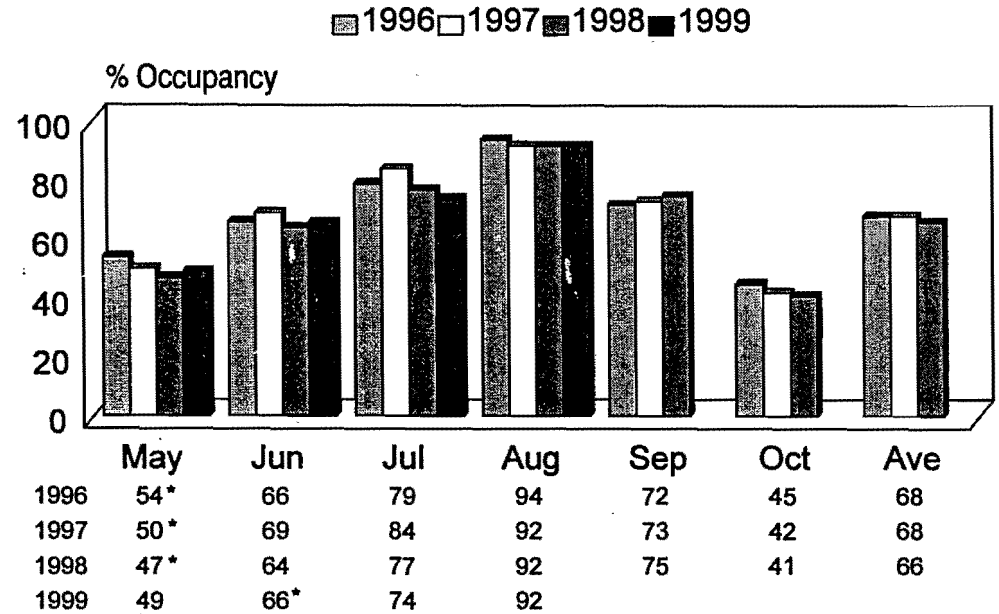
CARAVAN PARKS

The Demand Monitoring Survey measures shoulder and peak season occupancy in static caravan parks. Overall occupancy is expressed as a percentage of available lets over the period reported. Available lets are defined as those facilities which are available to be let for holidays for ten or more weeks of the year.

Figure 9 indicates that:

- May 1999 saw a two percentage point increase in occupancy levels compared to May 1998. On a regional level a five percentage point increase in occupancy levels was recorded in South Wales, with North and Mid Wales showing decreased demand of four and nine percentage points respectively;
- the occupancy rate for June showed a two percentage point increase over June 1998. Increased demand occurred in all three regions with Mid and South Wales both returning an increase of one percentage point, while North Wales occupancy rose by eleven percentage points;
- July 1999 saw a three percentage point decrease in occupancy levels compared to July 1998. On a regional level decreased occupancy was recorded in Mid and South Wales of four and five percentage points respectively, with North Wales showing no change;
- the occupancy rate for August showed no change when compared to August 1998. Decreased demand occurred in both North and Mid Wales of three and one percentage points respectively, with South Wales showing no change.

Figure 9: Static Park Occupancy in Wales



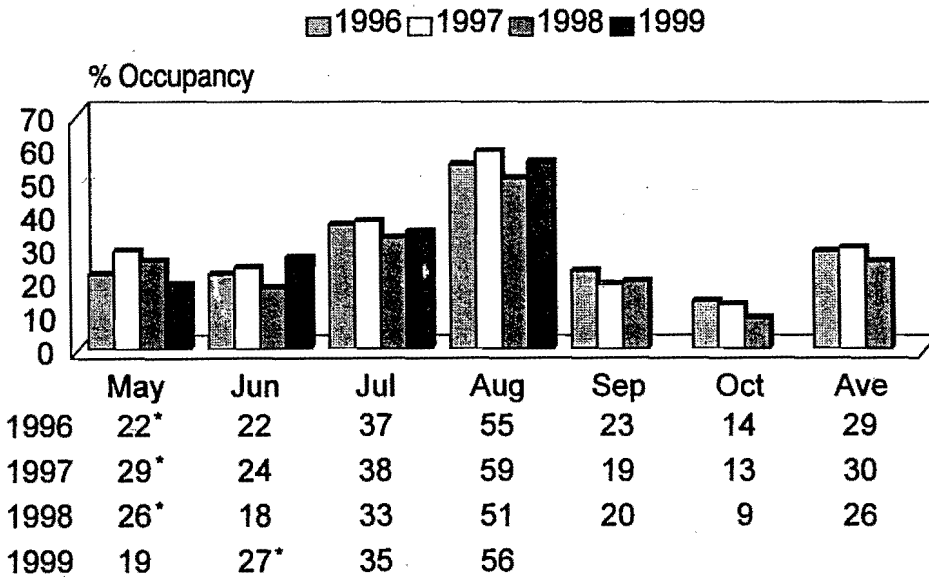
* Spring Bank Holiday

Source : WTB Demand Monitoring Survey

TOURING PARKS

TOURING PARKS

Figure 10: Touring Pitch Occupancy in Wales



* Spring Bank Holiday

Source : WTB Demand Monitoring Survey

The Demand Monitoring Survey measures peak and shoulder season occupancy in touring caravan parks.

Figure 10 indicates that:

- demand during May 1999 showed a seven percentage point decrease in occupancy levels over May 1998. All three regions of Wales also recorded decreased demand during this month;
- the occupancy rate for June showed a nine percentage point increase over the same month in 1998. Occupancy rates in the three regions of Wales all recorded increases, with North and South Wales both returning an increase of seven percentage points, while Mid Wales occupancy increased by five percentage points;
- July 1999 occupancy showed an increase of two percentage points when compared with the same month in 1998. There was a variation in demand between the three regions with North and Mid Wales both recording decreases of four percentage points, while South Wales recorded an increase in demand of three percentage points;
- increased demand continued into the month of August, with an increase of five percentage points compared with the same month in 1998. Within the three regions increased demand was recorded in South Wales with a seven percentage point increase, while both North and Mid Wales reported decreases of four and three percentage points respectively.