

National Assembly for Wales

Unemployment Briefing April 2010

This monthly briefing paper provides a statistical overview of unemployment trends. Information is included on Assembly constituencies, Wales and UK nations and regions.



Members'
Research
Service

The National Assembly for Wales is the democratically elected body that represents the interests of Wales and its people, makes laws for Wales and holds the Welsh Government to account.

The Members' Research Service is part of the National Assembly for Wales. We provide confidential and impartial research support to the Assembly's scrutiny and legislation committees, and to all 60 individual Assembly Members and their staff.

Members' Research Service briefings are compiled for the benefit of Assembly Members and their support staff. Authors are available to discuss the contents of these papers with Members and their staff but cannot advise members of the general public. We welcome comments on our briefings; please post or email to the addresses below.

An electronic version of this paper can be found on the National Assembly's website at: www.assemblywales.org/bus-assembly-publications-research.htm

Further hard copies of this paper can be obtained from:

Members' Research Service
National Assembly for Wales
Cardiff Bay
CF99 1NA

Email: MembersLibrary@wales.gsi.gov.uk

© National Assembly for Wales Commission Copyright 2010

The text of this document may be reproduced free of charge in any format or medium providing that it is reproduced accurately and not used in a misleading or derogatory context. The material must be acknowledged as copyright of the National Assembly for Wales Commission and the title of the document specified.

National Assembly for Wales

Unemployment Briefing
April 2010

Leon Goberman

Paper Number: 10 / 009

Members'
Research
Service



Unemployment Briefing: April 2010

Introduction

Unemployment statistics are published each month by the Office for National Statistics (ONS). This paper is released shortly after the ONS data and aims to provide a brief summary of the latest unemployment situation in Wales and the UK.

Section 1 contains headline figures and analysis. Additional information is provided in sections 2 to 5.

As well as information relating to the International Labour Organisation (ILO) and claimant count measures, this paper also includes unofficial residence-based claimant count rates for Assembly Constituencies. These are an alternative measure to those published by the ONS that are currently only available for parliamentary constituencies.

1: Headlines

ILO unemployment ¹

- In December 2009 to February 2010, the ILO unemployment rate in Wales was 9.0 per cent. This compares to 7.6 per cent in December 2008 to February 2009. *Figure 2.1;*
- In December 2009 to February 2010, the number of ILO unemployed in Wales was 131,000. This has increased by 10,000 since the previous quarter and by 22,000 since the previous year;
- The male ILO rate was 10.2 per cent, compared to 7.7 per cent for females. *Figure 2.1;*
- The ILO rate in Wales was the highest of the four UK nations. *Table 3.1;* and
- Wales had the fourth highest ILO rate of the twelve UK nations and regions. *Figure 4.1.*

Claimant count ²

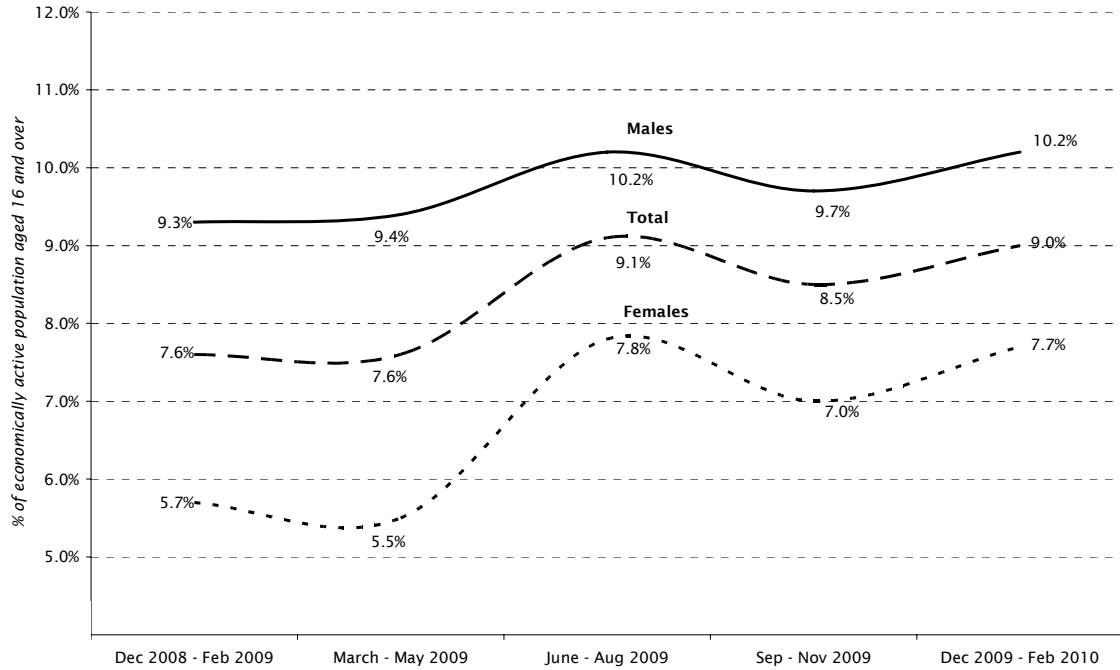
- In March 2010, the total claimant count rate in Wales was 5.3 per cent. This is the same rate as March 2009. *Figure 2.2;*
- The claimant count total in Wales has decreased by 2,000 since the previous month but increased by 1,200 since the previous March;
- At 6.3 per cent, Northern Ireland had the highest claimant count rate out of the UK nations. Wales had the second highest rate. *Table 3.2;*
- In March 2010, Wales' claimant count rate was ranked joint fifth highest out of the twelve UK nations and regions. *Figure 4.2;* and
- The Assembly Constituencies with the highest claimant count rates (based on unofficial estimates) were Blaenau Gwent (11.8 per cent) and Merthyr Tydfil and Rhymney (11.2 per cent). The lowest claimant count rate estimates were in Ceredigion and Montgomeryshire (both with 3.1 per cent). *Table 5.2.*

¹ The **International Labour Organisation (ILO)** unemployment rate is the number of ILO unemployed persons as a percentage of the economically active population aged 16 and over. It includes those who are out of work and want a job, have actively sought work in the last four weeks and are available to start work in the next two weeks; plus those who are out of work, have found a job and are waiting to start in the next two weeks. It is derived from a household survey carried out by the Office for National Statistics each quarter and is the primary measure of unemployment.

² The **claimant count** measures only those people who are claiming Jobseeker's Allowance. It is lower than the ILO definition, because some unemployed people are either not entitled to claim benefits, or choose not to do so. Rates for Assembly Constituencies are unofficial estimates produced by the Members' Research Service (see the Technical Annex).

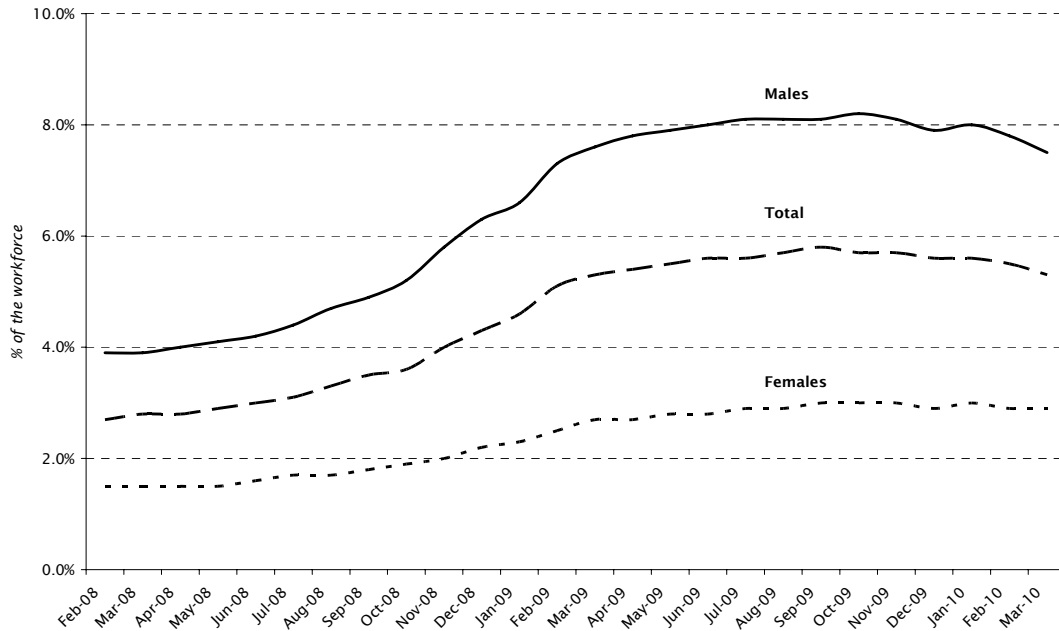
2: Unemployment statistics for Wales³

Figure 2.1: ILO unemployment rates



Source: Office for National Statistics

Figure 2.2: Claimant count rates



Source: Office for National Statistics

³ See Technical Annex for definitions of unemployment data used in this paper.

3: Unemployment statistics for UK nations

Table 3.1: ILO unemployment rates

December to February	Wales	England	Scotland	Northern Ireland	UK
2009/ 2010	9.0	8.0	7.8	6.4	8.0
2008/ 2009	7.6	6.9	5.5	5.9	6.8
2007/ 2008	4.9	5.3	4.9	4.1	5.2

Source: Office for National Statistics/ Stats Wales

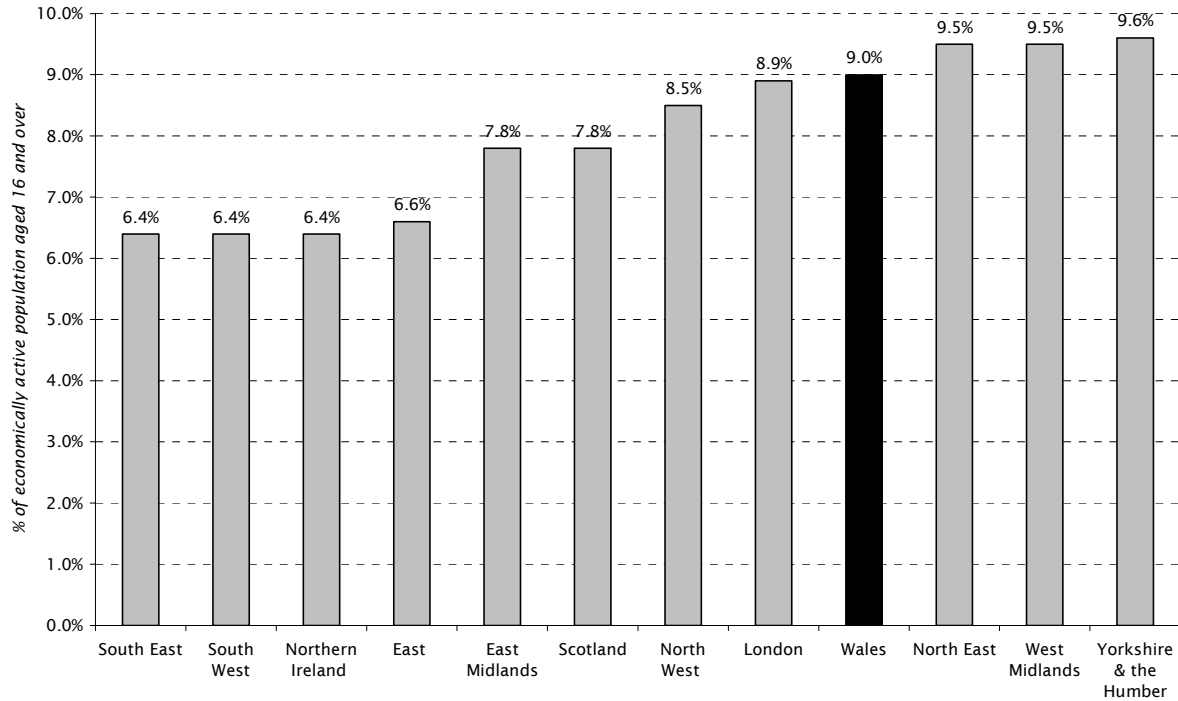
Table 3.2: Claimant count rates

March	Wales	England	Scotland	Northern Ireland	UK
2010	5.3	4.7	4.9	6.3	4.8
2009	5.3	4.5	4.2	5.1	4.5
2008	2.8	2.4	2.5	2.7	2.4

Source: Office for National Statistics/ Stats Wales

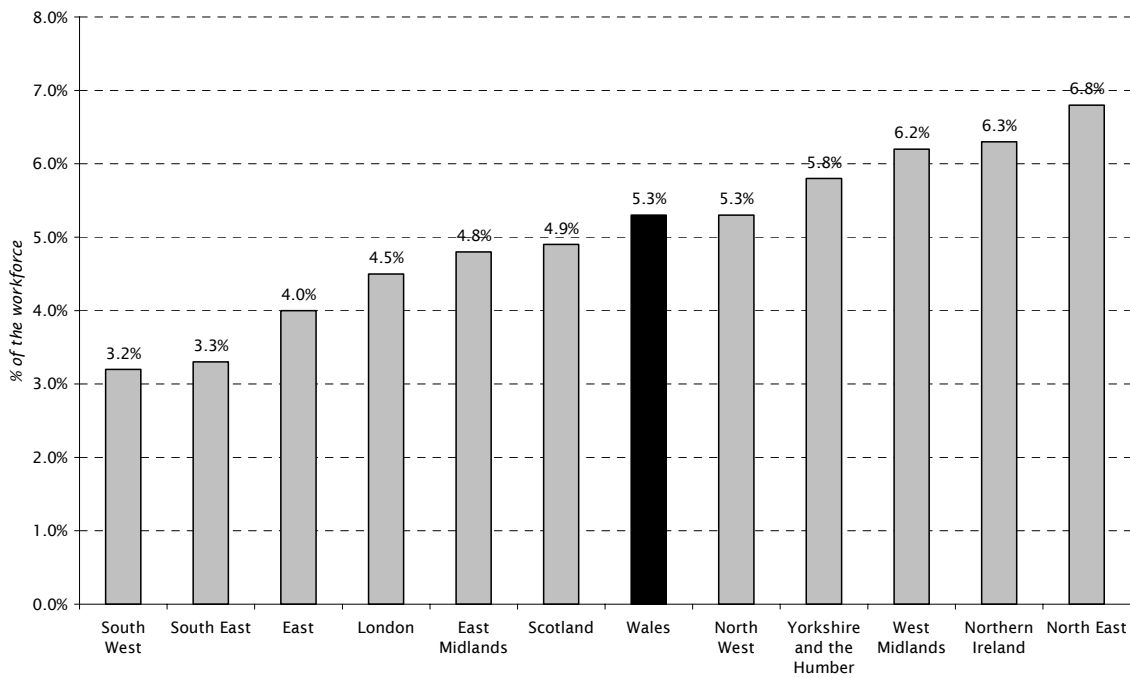
4: Unemployment statistics for UK nations and regions

Figure 4.1: ILO unemployment rates (December 2009 to February 2010)



Source: Office for National Statistics

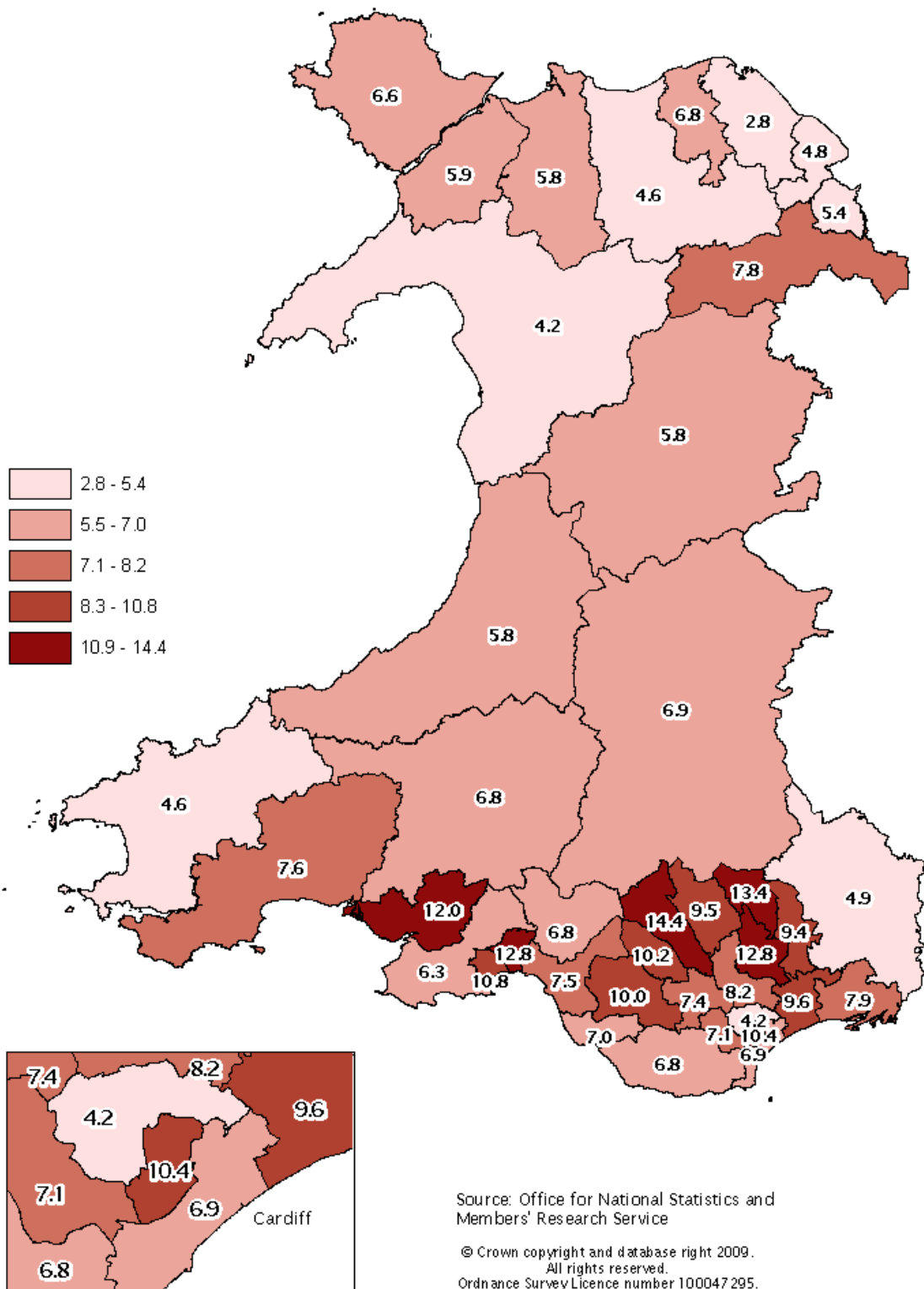
Figure 4.2: Claimant count rates (March 2010)



Source: Office for National Statistics

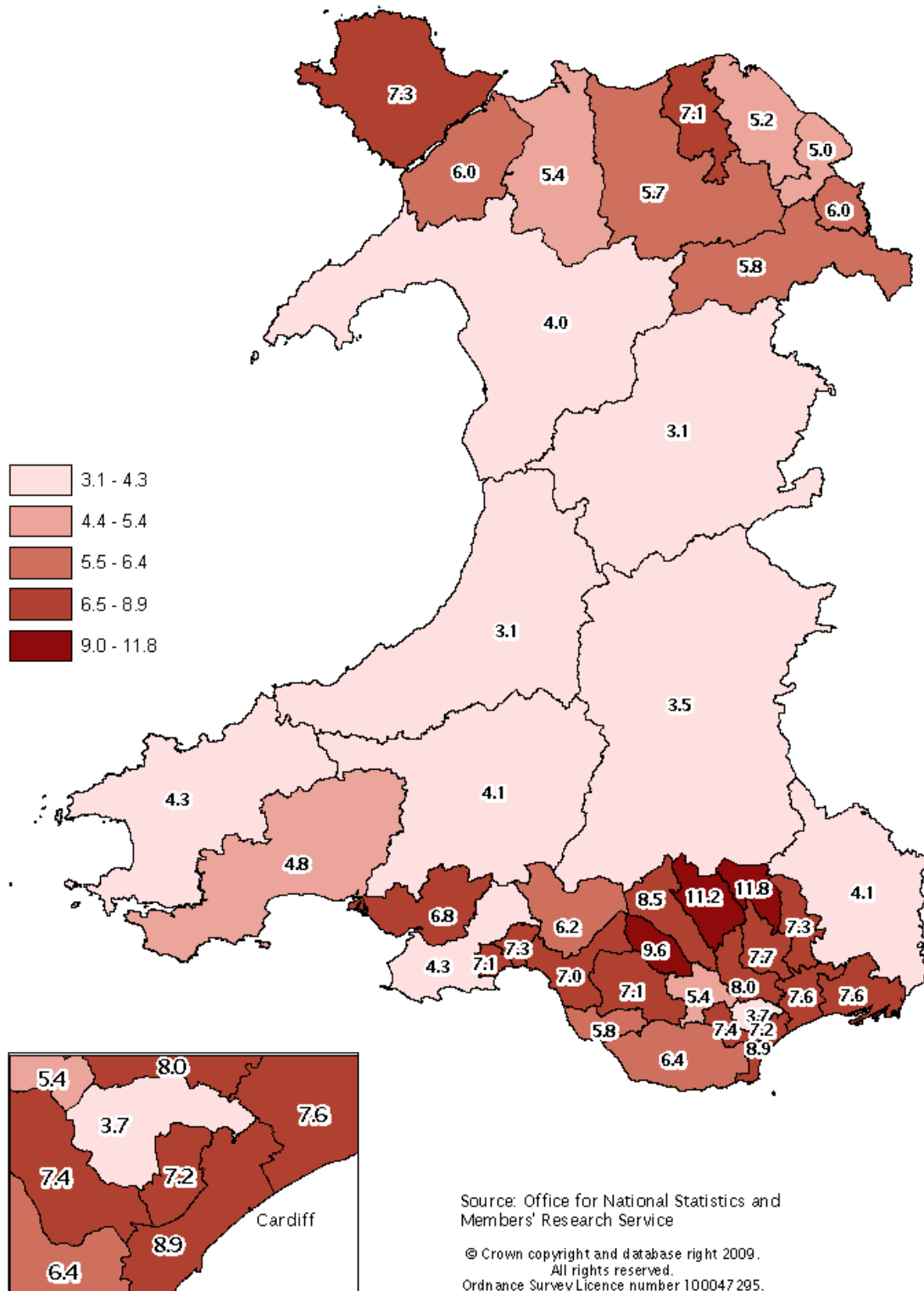
5: Unemployment statistics for Assembly constituencies

Map 5.1: ILO unemployment rates by Assembly constituency (July 2008 to June 2009) ⁴



⁴ Latest available data (not seasonally adjusted). The rate is the number of ILO unemployed persons employed as a percentage of the economically active population aged 16 and over.

Map 5.2: Unofficial claimant count rates by Assembly Constituency, March 2010⁵



⁵ Source: Members' Research Service. Claimants of Job Seekers Allowance as a **percentage** of the economically active population aged 16 and over as derived from the 2001 Census of Population.

Table 5.1 Claimant count by Assembly Constituency, March 2010

not seasonally adjusted

Constituency	Men	Women	People
Aberavon	1,318	404	1,722
Aberconwy	1,009	293	1,302
Alyn and Deeside	1,405	558	1,963
Arfon	1,170	329	1,499
Blaenau Gwent	2,384	862	3,246
Brecon and Radnorshire	777	318	1,095
Bridgend	1,381	443	1,824
Caerphilly	2,147	732	2,879
Cardiff Central	1,839	574	2,413
Cardiff North	1,076	357	1,433
Cardiff South and Penarth	2,663	929	3,592
Cardiff West	2,113	697	2,810
Carmarthen East and Dinefwr	845	304	1,149
Carmarthen West and South Pembrokeshire	1,059	423	1,482
Ceredigion	705	263	968
Clwyd South	1,380	469	1,849
Clwyd West	1,257	442	1,699
Cynon Valley	1,710	587	2,297
Delyn	1,256	465	1,721
Dwyfor Meirionydd	760	259	1,019
Gower	1,019	384	1,403
Islwyn	1,725	595	2,320
Llanelli	1,603	462	2,065
Merthyr Tydfil and Rhymney	2,298	783	3,081
Monmouth	1,092	363	1,455
Montgomeryshire	641	243	884
Neath	1,362	480	1,842
Newport East	1,944	615	2,559
Newport West	1,983	712	2,695
Ogmore	1,662	531	2,193
Pontypridd	1,408	462	1,870
Preseli Pembrokeshire	960	355	1,315
Rhondda	1,970	607	2,577
Swansea East	1,774	570	2,344
Swansea West	1,582	508	2,090
Torfaen	2,011	573	2,584
Vale of Clwyd	1,627	503	2,130
Vale of Glamorgan	2,052	675	2,727
Wrexham	1,394	527	1,921
Ynys Mon	1,546	529	2,075

Source: Nomis

Table 5.2: Unofficial residence-based claimant count rates by Assembly Constituency, March 2010 (a)

not seasonally adjusted

Constituency	Men	Women	People
Aberavon	9.7	3.7	7.0
Aberconwy	7.7	2.6	5.4
Alyn and Deeside	6.5	3.1	5.0
Arfon	8.8	2.8	6.0
Blaenau Gwent	15.6	7.0	11.8
Brecon and Radnorshire	4.5	2.3	3.5
Bridgend	8.1	3.1	5.8
Caerphilly	11.0	4.5	8.0
Cardiff Central	10.4	3.6	7.2
Cardiff North	5.4	1.9	3.7
Cardiff South and Penarth	12.5	4.9	8.9
Cardiff West	10.6	3.8	7.4
Carmarthen East and Dinefwr	5.4	2.4	4.1
Carmarthen West and South Pembrokeshire	6.3	3.0	4.8
Ceredigion	4.1	1.8	3.1
Clwyd South	7.8	3.3	5.8
Clwyd West	7.9	3.2	5.7
Cynon Valley	11.6	4.8	8.5
Delyn	6.9	3.1	5.2
Dwyfor Meirionydd	5.3	2.3	4.0
Gower	5.8	2.5	4.3
Islwyn	10.3	4.4	7.7
Llanelli	9.7	3.4	6.8
Merthyr Tydfil and Rhymney	15.2	6.3	11.2
Monmouth	5.7	2.2	4.1
Montgomeryshire	4.1	1.9	3.1
Neath	8.4	3.6	6.2
Newport East	10.6	4.0	7.6
Newport West	10.4	4.3	7.6
Ogmore	9.6	3.9	7.1
Pontypridd	7.5	2.9	5.4
Preseli Pembrokeshire	5.7	2.6	4.3
Rhondda	13.1	5.1	9.6
Swansea East	10.2	3.9	7.3
Swansea West	10.0	3.7	7.1
Torfaen	10.5	3.6	7.3
Vale of Clwyd	10.2	3.6	7.1
Vale of Glamorgan	8.9	3.4	6.4
Wrexham	8.0	3.6	6.0
Ynys Mon	9.8	4.2	7.3

Source: Members' Research Service

(a) Claimants of Job Seekers Allowance as a percentage of the economically active population aged 16 and over as derived from the 2001 Census of Population.

Technical Annex: Definitions of unemployment data

ILO unemployment

Definition: ILO (International Labour Organisation) unemployment is the number of those who are out of work and want a job, have actively sought work in the last four weeks and are available to start in the next two weeks; plus those who are out of work, have found a job and are waiting to start in the next two weeks.

Methodology used for calculating rates: ILO rates are calculated as a percentage of the population aged 16 and over who are economically active. Economically active people are those who are either in work or are unemployed under the ILO definition.

Source: The number of ILO unemployed is derived from the Labour Force Survey (LFS). The LFS is a sample survey of around 60,000 UK households carried out by the Office for National Statistics (ONS). The ONS states that quarter on quarter changes at regional level are particularly subject to sampling variability and **should be interpreted in the context of changes over several quarters rather than in isolation**. The figures have also been adjusted by ONS to take account of seasonal factors.

Geographical availability: The sample based nature of the LFS means that data for areas within Wales (such as Assembly Constituencies and local authorities) is not available on a rolling three-monthly basis. Data for Assembly Constituencies is only available on a rolling twelve-monthly basis, updated once a quarter.

Usage: ILO unemployment is now the headline unemployment indicator for the UK. It is a more encompassing measure of unemployment than the claimant count and enables international comparison of rates. The definition is used by most other countries, as well as Eurostat (the Statistical Office of the European Union), and the OECD (Organisation for Economic Co-operation and Development).

Claimant Count

Definition: The claimant count measures the number of people who are claiming Jobseekers Allowance.

Methodology used for calculating rates: Two methods have been used in this paper;

1. Workplace based rates. These rates have been calculated as the number of claimants resident in each area as a percentage of workforce jobs plus the claimant count. This approach is used for all figures and tables apart from those containing figures for Assembly Constituencies; and
2. Unofficial claimant count rates. Official Claimant count rates or proportions are not available for the Assembly Constituency boundaries that came into effect in May 2007. Claimant count **proportions for Parliamentary Constituencies** are available from the Office for National Statistics (ONS). The ONS claimant count proportions use the population of working age as a denominator and so take no account of differences between areas in the proportion that are economically active. Residence-based claimant count **rates for Assembly Constituencies** have been calculated by the Members' Research Service, expressing the number of claimants as a percentage of the economically active population aged 16 and over who are resident in the constituency. This produces an alternative measure of unemployment to those published by the Office for National Statistics. The number of economically active residents in each constituency is derived from the 2001 Census of Population results for the revised Assembly Constituency boundaries produced by the Office for National Statistics.

Source: The claimant count comes from the administrative records of Jobcentre Plus. It is always lower than the ILO measure of unemployment because some unemployed people are either not entitled to claim Jobseekers allowance, or choose not to do so. The figures have also been adjusted by ONS to take account of seasonal factors (apart from those shown in Maps 5.1 and 5.2, and Tables 5.1 and 5.2).

Geographical availability: It is available across a broad of smaller administrative areas, including Assembly constituencies and wards.

Usage: Although it only provides a partial picture, the greater coverage and timeliness of the claimant count is useful to maintain a picture of the labour market at a local level.

