

The Dragon Challenge

Activity Book



Name:

School:



The Welsh Parliament is the democratically elected body that represents the interests of Wales and its people.

Commonly known as the Senedd, it makes laws for Wales, agrees Welsh taxes and holds the Welsh Government to account.

© Senedd Commission Copyright 2025

The text of this document may be reproduced free of charge in any format or medium providing that it is reproduced accurately and not used in a misleading or derogatory context. The material must be acknowledged as copyright of the Welsh Parliament Commission and the title of the document specified.

Information for teachers, parents and carers

Welcome to the Senedd activity trail

This resource is aimed at educating those aged between 5-8 about the Senedd building and the work of the Welsh Parliament.

Our aim is that children will:

- Understand that the Senedd is an important building to the people of Wales
- Learn about the Senedd's sustainable features
- Find out about the role of a Member of the Senedd and the work of the Welsh Parliament
- Think about the issues important to them, such as climate change, education and health

The Senedd

Welcome to the Senedd!
(se-neth).

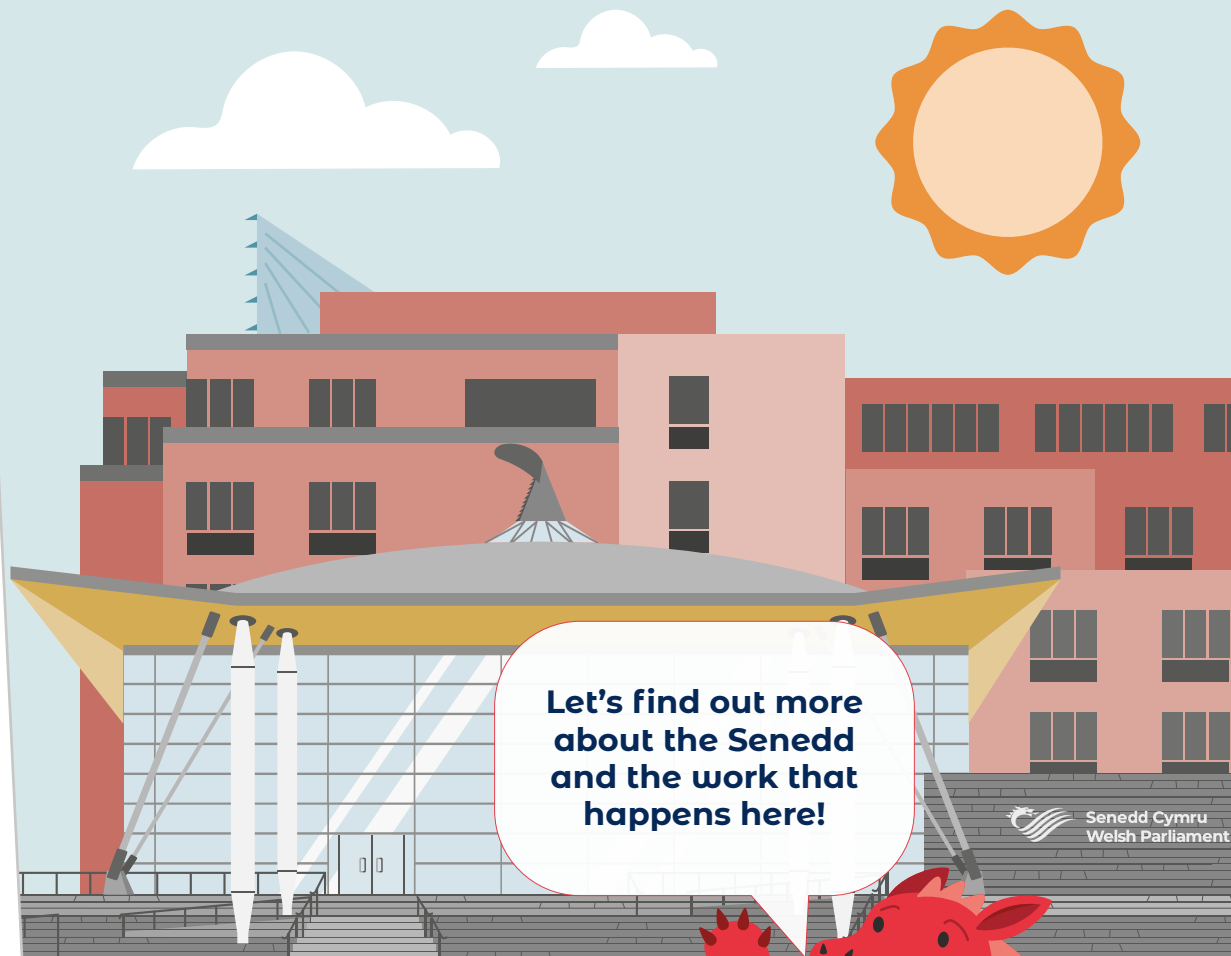
This is a very important building in Wales.

In English, **Senedd** means 'Parliament' (par-lee-a-ment).

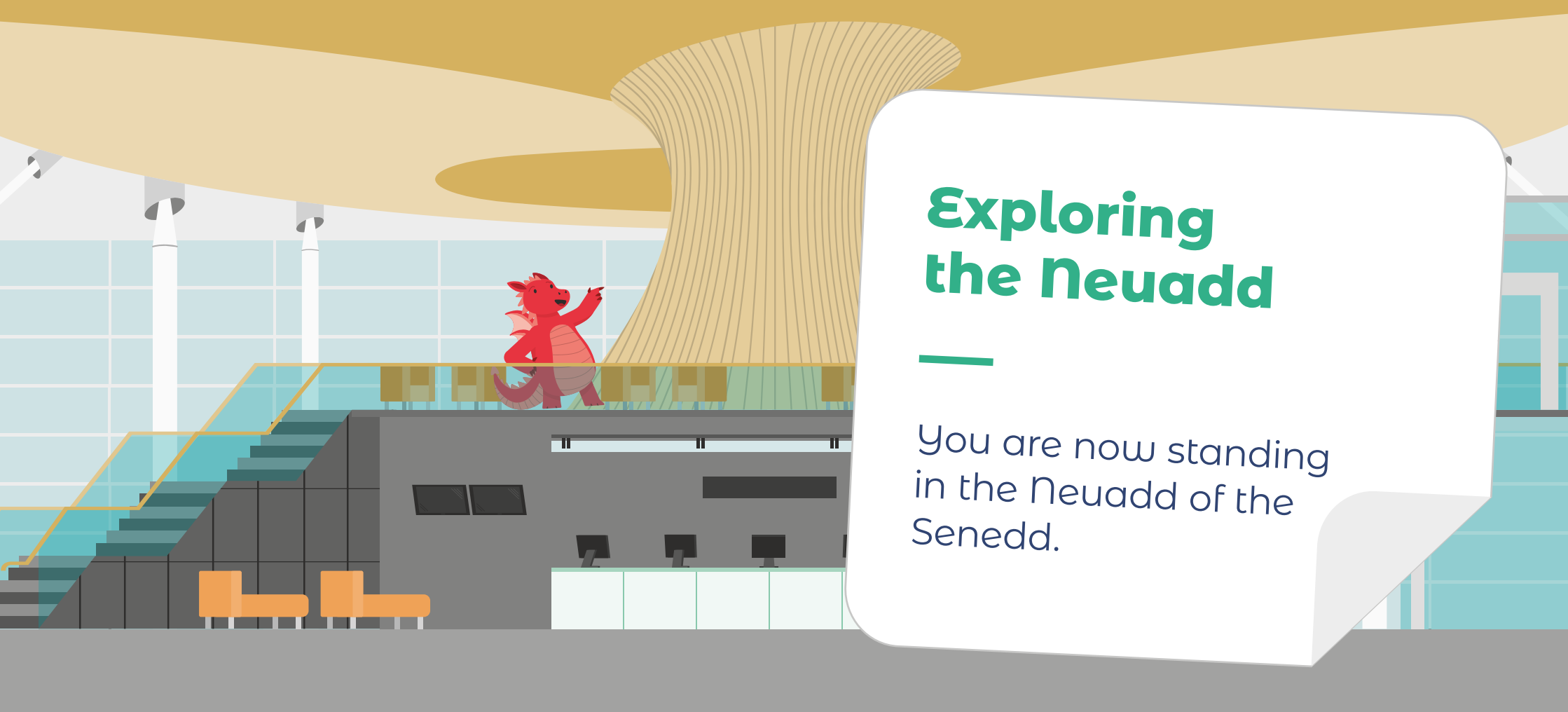
A Parliament is a group of people who meet to discuss important issues and make new laws.

In the Senedd, Members meet to talk about important issues that affect people in Wales.

Let's find out more
about the Senedd
and the work that
happens here!



Senedd Cymru
Welsh Parliament



Exploring the Neuadd

You are now standing in the Neuadd of the Senedd.

Can you guess how we collect rain water?

.....

.....

.....

.....

.....

What do you think we use the rain water for?

.....

.....

.....

.....

.....

How do you think the glass walls help us save energy?

.....

.....

.....

.....

.....

Why is saving energy important?

.....

.....

.....

.....

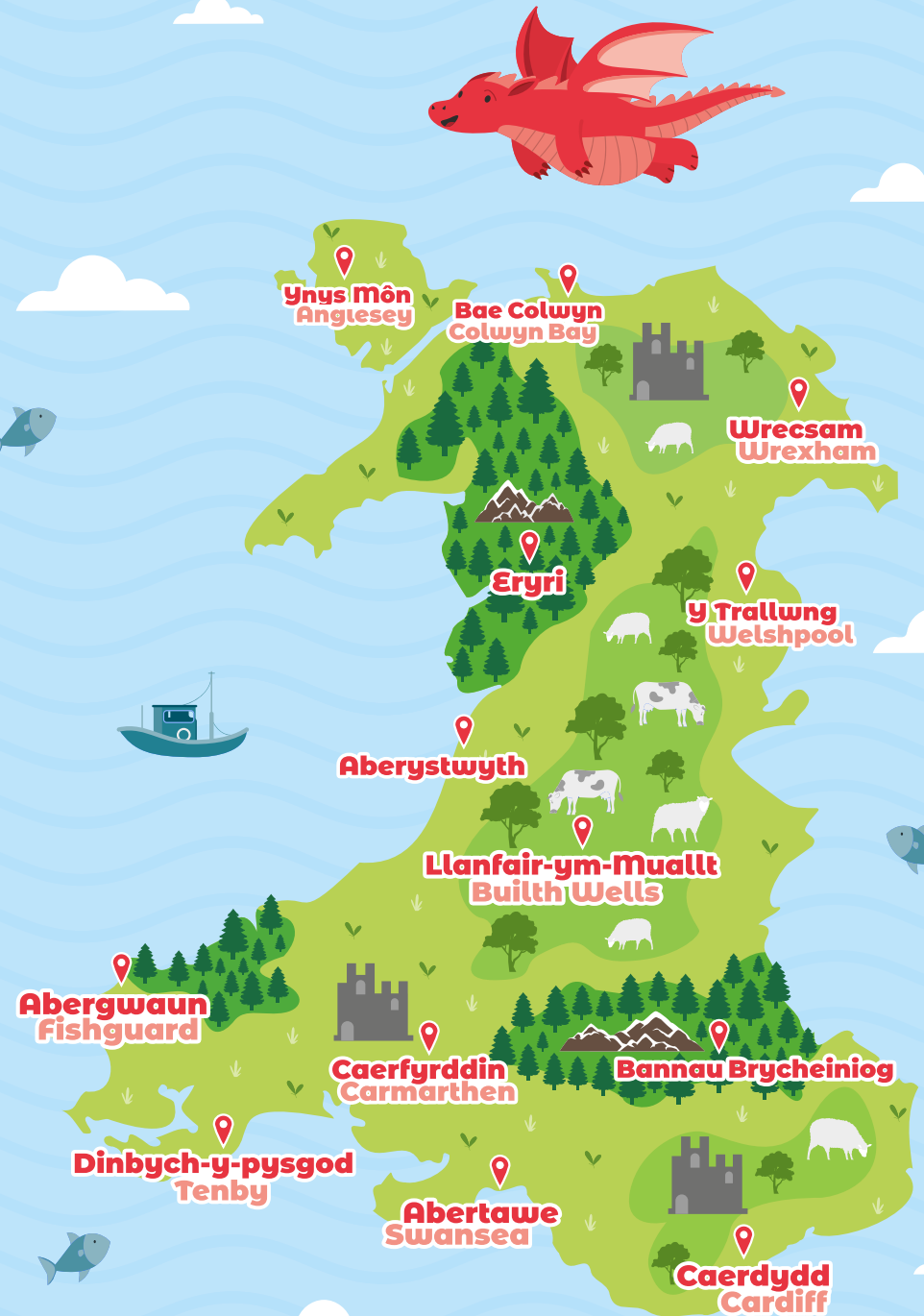
.....

Maps of Wales

These maps show lots of places in Wales.

Draw an **X** on this map to show where you live.

What do you like about where you live?
Write or draw your answers below:





The Oriel

This is called the **Oriel**, which means 'gallery' in Welsh. In the middle of the Senedd is the funnel.

The funnel is an unusual shape. What does it remind you of?

What material do you think it is made from?

Look up at the ceiling. What shapes can you see?

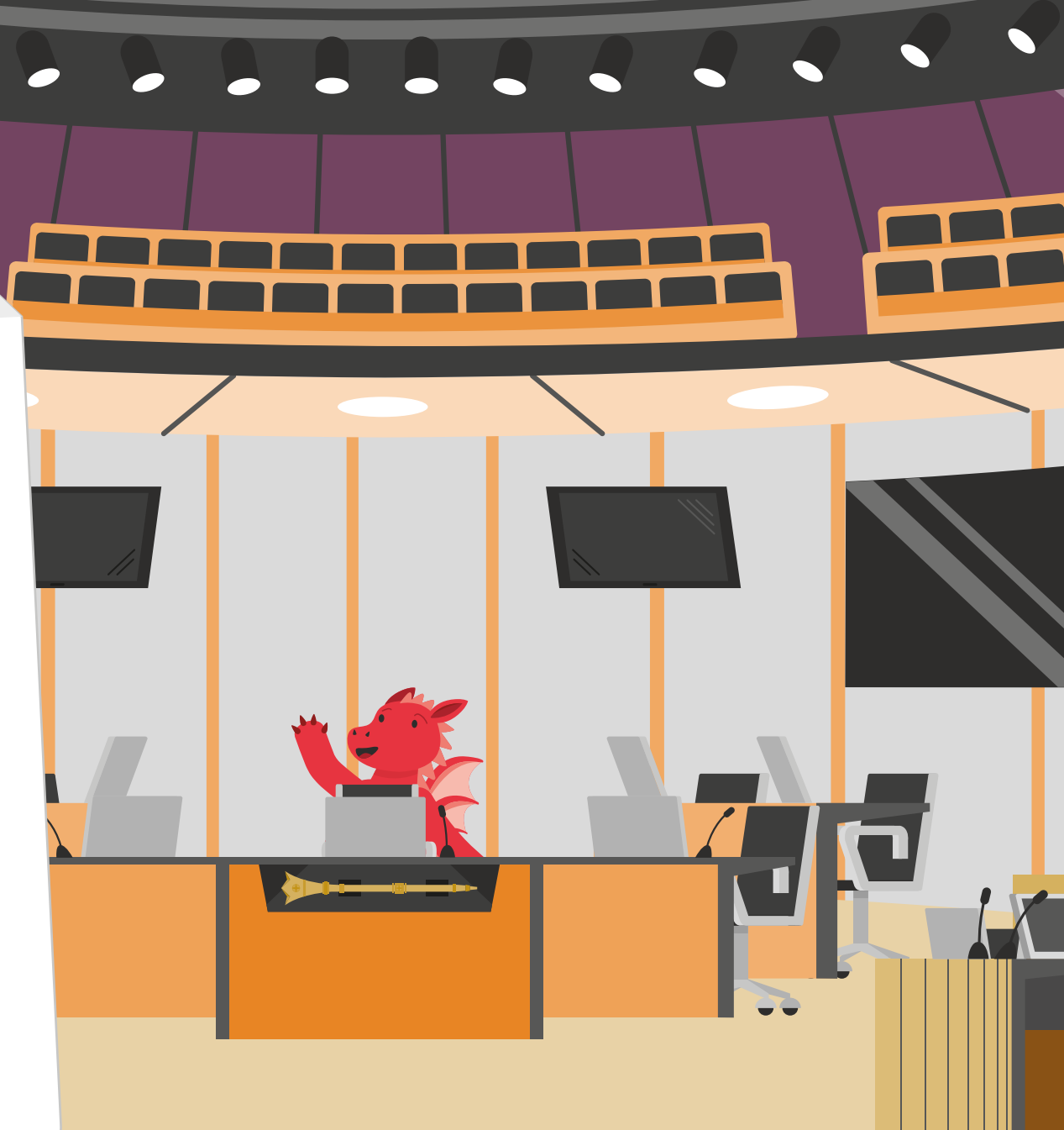
Look down below the funnel. What can you see?

The Chamber

This is the most important room in the Senedd.

The Chamber is where Members meet to talk about important issues and decide new laws for Wales.

Can you think of a new idea to make Wales better? Write or draw your answer here:





Inside the Chamber

Who works in the Chamber?



Elin Jones is the Llywydd of the Senedd.

Her job is to make sure everyone has a chance to speak if they want to, and that all Members are treated fairly.



Eluned Morgan is the First Minister of Wales, and leader of the Welsh Government.

The other Members of the Senedd ask questions every week in the Chamber. They check on how the Welsh Government is running the country.

Inside the Chamber

There are some interesting things to look at inside the Chamber.



Using the clues, can you find the objects in the pictures? Draw a line to link the right picture to the right information.



The Heart of Wales

Look down to the middle of the floor and you will see this piece of art.

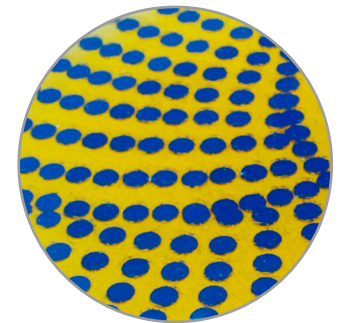
Made of glass and resin, it represents the Senedd at the heart of life in Wales.

The Mace

You can see the mace in front of where the Presiding Officer sits.

The Mace is made of gold, silver and brass.

It is carried into the Chamber at the start of a new parliament.





Inside the Chamber

Can you find your way through the Chamber, find the Mace in the centre and back out again?



The Mace was a gift to the Welsh Parliament from the Parliament of New South Wales in Australia.

It was presented to the Welsh Parliament on 1 March 2006 at the Royal Opening.

The Mace is hand crafted from gold, silver and brass and it was designed and made by the Melbourne goldsmith Fortunato Rocca.

It took 300 hours to make and is decorated with the emblems of the Parliament of New South Wales and the Welsh Parliament.

The role of a Member

The people in my area voted for me so now I have the job of representing them in the Senedd.

I help make sure that the Government makes the best choices for Wales.



What question would you like to ask your Member of the Senedd?

Write or draw your answer below:

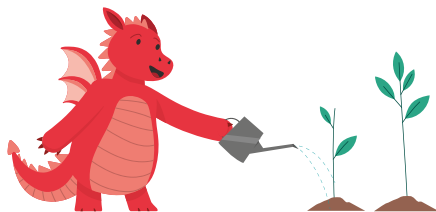


my idea!

The future of Wales

What changes would you like to see where you live?

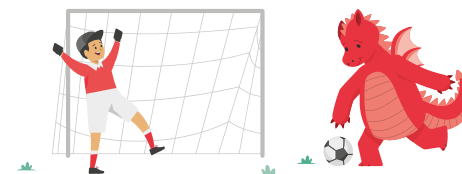
Circle your favourite idea, or add your own



More plants and trees?



Cleaner streets?



More places to play?



Senedd Cymru
Welsh Parliament

www.senedd.cymru | www.senedd.wales