

National Assembly for Wales

Key Statistics for Ynys Môn May 2010

This paper provides key statistics under a number of topic headings for the National Assembly for Wales constituency of Ynys Môn.

This is one of a series of Members' Research Service profiles for the National Assembly for Wales' constituencies and electoral regions in Wales. These profiles replace those published in 2007.

Members'
Research
Service



The National Assembly for Wales is the democratically elected body that represents the interests of Wales and its people, makes laws for Wales and holds the Welsh Government to account.

The Members' Research Service is part of the National Assembly for Wales. We provide confidential and impartial research support to the Assembly's scrutiny and legislation committees, and to all 60 individual Assembly Members and their staff.

Members' Research Service briefings are compiled for the benefit of Assembly Members and their support staff. Authors are available to discuss the contents of these papers with Members and their staff but cannot advise members of the general public. We welcome comments on our briefings; please post or email to the addresses below.

An electronic version of this paper can be found on the National Assembly's website at: www.assemblywales.org/bus-assembly-publications-research.htm

Further hard copies of this paper can be obtained from:

Members' Research Service
National Assembly for Wales
Cardiff Bay
CF99 1NA

Email: MembersLibrary@wales.gsi.gov.uk

© National Assembly for Wales Commission Copyright 2010

The text of this document may be reproduced free of charge in any format or medium providing that it is reproduced accurately and not used in a misleading or derogatory context. The material must be acknowledged as copyright of the National Assembly for Wales Commission and the title of the document specified.

National Assembly for Wales

Key Statistics for Ynys Môn
May 2010

Rachel Dolman

Paper Number: 10 / 051



Members'
Research
Service

Summary

This profile provides a statistical overview of Ynys Môn. Detailed statistics are presented in sections one to six of the paper.

Summary of results

- mid 2007 population estimates show that around 69,000 people live in Ynys Môn. With 97 people per square kilometre the area is less densely populated than Wales as a whole;
- a higher share of the population in the area (24 per cent) than in Wales (21 per cent) is of retirement age;
- the 2008 Annual Population Survey estimated 63 per cent of people aged 3 or more can speak Welsh, compared with 27 per cent across Wales;
- turn-out for the constituency ballot in the 2007 National Assembly for Wales elections was 52.1 per cent. This was above that for Wales (43.5 per cent). The winning party was Plaid Cymru;
- in February 2010, around 5.4 per cent of the working age population in Ynys Môn were claiming Jobseeker's Allowance. The equivalent figure for Wales was 4.6 per cent. In 2008, around 69 per cent of working age adults were in employment compared with 71 per cent in Wales;
- 2006-08 data show the average gross weekly earnings for those working in Ynys Môn was around £458. The equivalent figure for Wales was £470;
- in 2007, an estimated 14 per cent of working age adults in Ynys Môn had no qualifications, this compares with 15 per cent in Wales;
- Welsh Health Survey results for 2003-07 showed that, around 25 per cent of adults in Ynys Môn reported that they currently smoke and 31 per cent reported drinking more than the daily guidelines on at least one day in the past week. The equivalent figures for Wales were 26 per cent and 36 per cent respectively; and
- the Welsh Index of Multiple Deprivation 2008 ranks specific small areas in Wales in terms of deprivation. In Ynys Môn, 5 per cent of areas fall in the 10% most deprived areas in Wales but overall the majority of its areas are more deprived than the Wales average.

Contents

Introduction	1
About the data	1
Map of Ynys Môn.....	2
1. Population statistics	3
2. Economic and labour market statistics.....	4
3. Education statistics	5
4. Health, housing and transport statistics	6
5. Deprivation statistics	7
Child Index	7
6. Comparisons with earlier years	9
Qualifications of 15 year olds and Jobseeker's Allowance	9
7. Sources and notes	10
Sources for further information	10
Links to further information	10
Notes and definitions	11

Key Statistics for Ynys Môn

Introduction

This paper presents statistics for the National Assembly for Wales constituency area of Ynys Môn. It is part of a series of profiles for the Assembly constituencies and electoral regions in Wales. These profiles are based on the constituencies and electoral regions introduced for the Assembly elections in 2007, and replace the profiles published by the Member's Research Service in March 2007. A separate profile has been produced for each constituency. Statistics for the five electoral regions have been brought together in a single paper.

About the data

The tables in this paper show statistics for Ynys Môn along with comparable figures for the electoral region it is part of (North Wales¹) and for Wales as a whole. The information is drawn from a number of different sources. Therefore, **not all information presented in the profile relates to the same time period**. The time periods are shown in the tables, and details on the data sources and definitions used are provided in section 7 ([Sources and notes](#)).

Results presented in this profile should not be compared with those in the 2007 profile because, although the indicators may appear to be the same, a number of the data sources and definitions used have changed.

Since electoral geographies do not form a standard statistical geography, and the areas covered are small, the **availability of robust data is limited**. Therefore, **it is not possible to include statistics on all topics of interest**, for example, child poverty, those not in employment, education or training (NEETs), and social services. For the same reason, these profiles do not contain detailed commentary and charts showing trends.

Many of the results are taken from surveys. Therefore, the results shown are estimates of the true value and will be subject to sampling error. Because of the small numbers of survey respondents in each constituency, many of the estimates are not robust enough to say whether the results for the constituency are statistically different from that of Wales as a whole. Due to robustness, some figures in the tables are rounded to whole numbers rather than to 1 decimal place.

An electronic version of this paper is available on the [Members' Research Service](#) pages of the [National Assembly for Wales' website](#).

¹ The electoral region of North Wales contains the following constituencies: Aberconwy, Alyn & Deeside, Arfon, Clwyd South, Clwyd West, Delyn, Vale of Clwyd, Wrexham and Ynys Môn.

Map of Ynys Môn



1. Population statistics

Letter refers to sources and notes	Ynys Môn	North Wales	Wales	Units	
Population, mid-2007:					
a	Total population	69.0	617.6	2,980.0	Number (thousands)
a	Change in population, 2001-2007	3.3	2.4	2.6	Per cent
b	Area	711	4,023	20,742	Square kilometres
b	Population density	97	154	144	Number per sq km
a Age and sex profile, mid-2007:					
	Male	48.8	48.8	48.8	Per cent
	Female	51.2	51.2	51.2	Per cent
	Aged 0-15	18.1	18.5	18.7	Per cent
c	Working age	57.6	59.4	60.3	Per cent
c	Retirement age	24.3	22.1	21.0	Per cent
d Population groups, 2001:					
	Single (never married)	25.8	27.3	28.0	Per cent of those aged 16+
e	Living in a communal establishment	1.0	1.6	1.5	Per cent
f	Non-White Ethnic Group	0.7	1.0	2.1	Per cent
g	Migrant	10.0	10.8	11.2	Per cent
d Place of birth, 2001:					
	Wales	67.6	61.1	75.4	Per cent
	Other UK	29.8	36.1	21.4	Per cent
h	Elsewhere in EU	1.4	1.3	1.3	Per cent
h	Non-EU	1.2	1.4	1.9	Per cent
i	Can speak Welsh, 2008	63.1	36.8	26.5	Per cent of those aged 3+
j 2007 Assembly Election results					
	Winning party	Plaid Cymru	.	.	
	Share of the vote by winning party	39.7	.	.	Per cent of valid votes cast
	Turnout	52.1	42.6	43.5	Valid votes as per cent of the electorate
k	Assembly Electorate, 2008	51.0	470.9	2,279.8	Number (thousands)
l	Parliamentary Electorate, 2008	50.9	466.2	2,261.8	Number (thousands)

Source: For details of the data sources refer to [Sources and notes](#), in section 7.

2. Economic and labour market statistics

Letter refers to sources and notes	Ynys Môn	North Wales	Wales	Units
a National Statistics Socio-economic Classification, 2001:				
Managerial and professional	20.4	21.9	22.0	<i>Per cent of ages 16-74</i>
Intermediate	15.2	15.3	15.1	<i>Per cent of ages 16-74</i>
Routine and Manual	30.5	32.1	30.0	<i>Per cent of ages 16-74</i>
Never worked and long-term unemployed	4.4	3.3	3.8	<i>Per cent of ages 16-74</i>
Not classifiable	29.5	27.4	29.1	<i>Per cent of ages 16-74</i>
b Economic activity, 2008:				
In employment	69.2	74.2	70.7	<i>Per cent of working age</i>
Economically inactive, excluding students	22.0	18.0	20.5	<i>Per cent of working age</i>
c Average weekly earnings, 2006-08				
	458	475	470	£
d Jobseeker's Allowance claimants, February 2010:				
Persons	5.4	4.5	4.6	<i>Per cent of working age</i>
Males	7.6	6.5	6.7	<i>Per cent of working age</i>
Females	2.9	2.4	2.4	<i>Per cent of working age</i>
Aged 24 and under	30	32	35	<i>Per cent of claimants</i>
Aged 25-49	55	53	51	<i>Per cent of claimants</i>
Aged 50+	14	15	14	<i>Per cent of claimants</i>
Up to 6 months duration	64	67	65	<i>Per cent of claimants</i>
6 to 12 months duration	16	18	19	<i>Per cent of claimants</i>
Over 12 months duration	20	15	15	<i>Per cent of claimants</i>
e Claimants of other benefits, 2008:				
f Incapacity benefit and/or severe disablement allowance claimants:				
Persons	9.1	8.7	10.5	<i>Per cent of working age</i>
Males	10.7	9.7	11.6	<i>Per cent of working age</i>
Females	7.3	7.5	9.4	<i>Per cent of working age</i>
g Disability living allowance claimants				
	8.5	8.5	9.7	<i>Per cent of the under 65s</i>
h Income support claimants				
	7.8	8.3	10.1	<i>Per cent of households</i>
i Pensions credit beneficiaries:				
Guarantee credit only	8.8	8.0	8.3	<i>Per cent of aged 60+</i>
Guarantee & savings credit	12.5	13.3	13.6	<i>Per cent of aged 60+</i>

Source: For details of the data sources refer to [Sources and notes](#), in section 7.

3. Education statistics

Data are for 2008/09 unless another year is given

Letter refers to sources and notes	Ynys Môn	North Wales	Wales	Units
a Highest qualification attained, 2007:				
Level 4 and above	24	26	27	<i>Per cent of the working age</i>
Level 3	21	20	20	<i>Per cent of the working age</i>
Level 2	24	24	21	<i>Per cent of the working age</i>
Below level 2	17	16	17	<i>Per cent of the working age</i>
No qualifications	14	13	15	<i>Per cent of the working age</i>
b Achievements in teacher assessments in each of the core subjects:				
c				
Level 2 at Key Stage 1	78.8	81.3	81.1	<i>Per cent</i>
Level 4 at Key Stage 2	76.7	77.8	77.0	<i>Per cent</i>
Level 5 at Key Stage 3	61.9	62.9	61.3	<i>Per cent</i>
d GCSE Examination / equivalent achievements:				
5+ GCSE Grades A*-C	57.8	59.8	60.6	<i>Per cent of 15 year olds</i>
A*-C in each of the core subjects	47.3	46.3	46.0	<i>Per cent of 15 year olds</i>
Average wider points score	357.2	380.8	378.8	<i>Score</i>
e Leaving full time education without a recognised qualification, 2008				
	0.5	1.0	1.5	<i>Per cent of 15 year old pupils</i>
f A Level Examination / equivalent achievements:				
2+ A Level Grades A-E				
	98.9	95.9	96.0	<i>Per cent of entrants</i>
Average wider points score	931.2	728.2	687.7	<i>Score</i>
g Absence from maintained secondary schools:				
Unauthorised absence	0.9	1.6	1.7	<i>Per cent of half-day sessions</i>
All absence	9.1	8.4	9.0	<i>Per cent of half-day sessions</i>
h Pupil teacher ratios:				
Primary schools	19.6	19.7	20.0	<i>Ratio</i>
Secondary schools	16.1	16.1	16.4	<i>Ratio</i>
h Average class sizes:				
Key Stage 1	23.3	23.8	24.5	<i>Number of pupils</i>
Key Stage 2	23.5	24.6	25.0	<i>Number of pupils</i>
Mixed Key Stages 1 & 2	23.3	22.1	23.0	<i>Number of pupils</i>
Key Stage 3	23.5	23.2	23.6	<i>Number of pupils</i>
Secondary: Years 7-11	20.5	21.6	22.1	<i>Number of pupils</i>
Secondary: Years 12-13	11.0	10.2	10.9	<i>Number of pupils</i>
i Pupils entitled to free school meals				
	17.7	15.1	17.8	<i>Per cent of compulsory school age pupils</i>

Source: For details of the data sources refer to [Sources and notes](#), in section 7.

4. Health, housing and transport statistics

Letter refers to sources and notes	Ynys Môn	North Wales	Wales	Units	
a Welsh Health Survey, 2003/04 - 2007:					
	Limiting long-term illness	26	26	27	<i>Per cent of adults</i>
	General health 'fair' or 'poor'	18	19	22	<i>Per cent of adults</i>
	Providing unpaid care for 50+ hours a week	4	4	4	<i>Per cent of adults</i>
b	Any heart condition (excluding high blood pressure)	10	9	9	<i>Per cent of adults</i>
b	High blood pressure	19	19	19	<i>Per cent of adults</i>
	Smoker	25	26	26	<i>Per cent of adults</i>
c	Consumption of alcohol: above guidelines	31	34	36	<i>Per cent of adults</i>
c	Consumption of alcohol: binge	15	17	19	<i>Per cent of adults</i>
d	Overweight or obese	53	53	55	<i>Per cent of adults</i>
d	Obese	17	17	19	<i>Per cent of adults</i>
e	Visited a dentist, 2009	45	53	56	<i>Per cent of population</i>
f Households, 2001:					
g	Total	28,356	252,983	1,209,048	<i>Number</i>
	Average size	2.3	2.3	2.4	<i>Number of members</i>
	One person	29.2	29.8	29.1	<i>Per cent</i>
h	Lone parent with dependent children	6.9	6.4	7.3	<i>Per cent</i>
	Pensioner	27.2	26.4	25.6	<i>Per cent</i>
	One or more person with limiting long-term illness	40.6	39.4	42.4	<i>Per cent</i>
	No central heating	19.1	12.8	7.5	<i>Per cent</i>
i	Overcrowded	3.3	4.1	4.4	<i>Per cent</i>
f Household spaces 2001:					
g	Total household spaces	31,045	266,069	1,275,819	<i>Number</i>
	Vacant	4.9	3.6	4.0	<i>Per cent</i>
	Second home/holiday accommodation	3.8	1.3	1.2	<i>Per cent</i>
f Tenure 2001:					
	Owner Occupied	68.0	70.7	71.3	<i>Per cent</i>
	Local Authority	15.5	14.5	13.7	<i>Per cent</i>
	Housing Association/ Registered Social Landlord	1.5	3.2	4.2	<i>Per cent</i>
	Private Landlord	9.5	8.4	7.4	<i>Per cent</i>
	Other	5.5	3.2	3.3	<i>Per cent</i>
Use of transport:					
j	Own or have access to a motor vehicle (2006)	86	86	84	<i>Per cent of population</i>
k	Travel to work by car (2008)	85	83	81	<i>Per cent of those in employment</i>

Source: For details of the data sources refer to [Sources and notes](#), in section 7.

5. Deprivation statistics

The Welsh Index of Multiple Deprivation 2008 (WIMD)² is a measure of deprivation for small areas in Wales. It ranks statistical geographies known as Lower Super Output Areas (LSOAs) in terms of deprivation across various categories (known as domains) such as health and employment, as well as providing an overall deprivation rank.

Although WIMD does not provide deprivation ranks for constituencies as a whole it is possible to look at the rank of LSOAs within a constituency.³

Figure 2, overleaf, shows the LSOAs within Ynys Môn shaded according to their overall level of deprivation. Of the 44 LSOAs in Ynys Môn, the map shows that 2 were in the most deprived 10% in Wales.

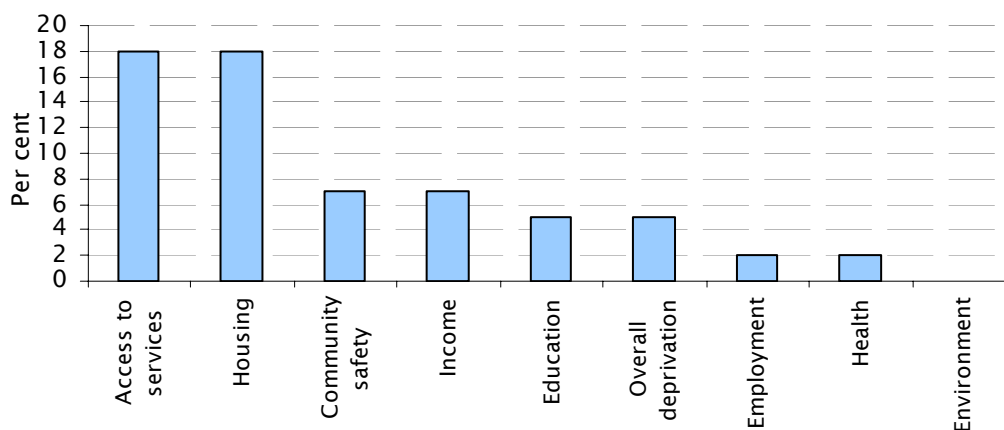
In Ynys Môn:

5 per cent of its LSOAs fall within the 10% most deprived LSOAs in Wales.

55 per cent of its LSOAs fall within the 50% most deprived LSOAs in Wales.

In relation to Wales as a whole, this means that a relatively low proportion of areas in Ynys Môn are among the 10% most deprived, but overall, the majority of areas fall in the more deprived half of Wales.

Figure 1: The percentage of LSOAs in Ynys Môn that are in the 10% most deprived LSOAs in Wales, by domain, 2008



Source: [Welsh Index of Multiple Deprivation 2008](#), StatsWales [006028]³

*Child Index*³

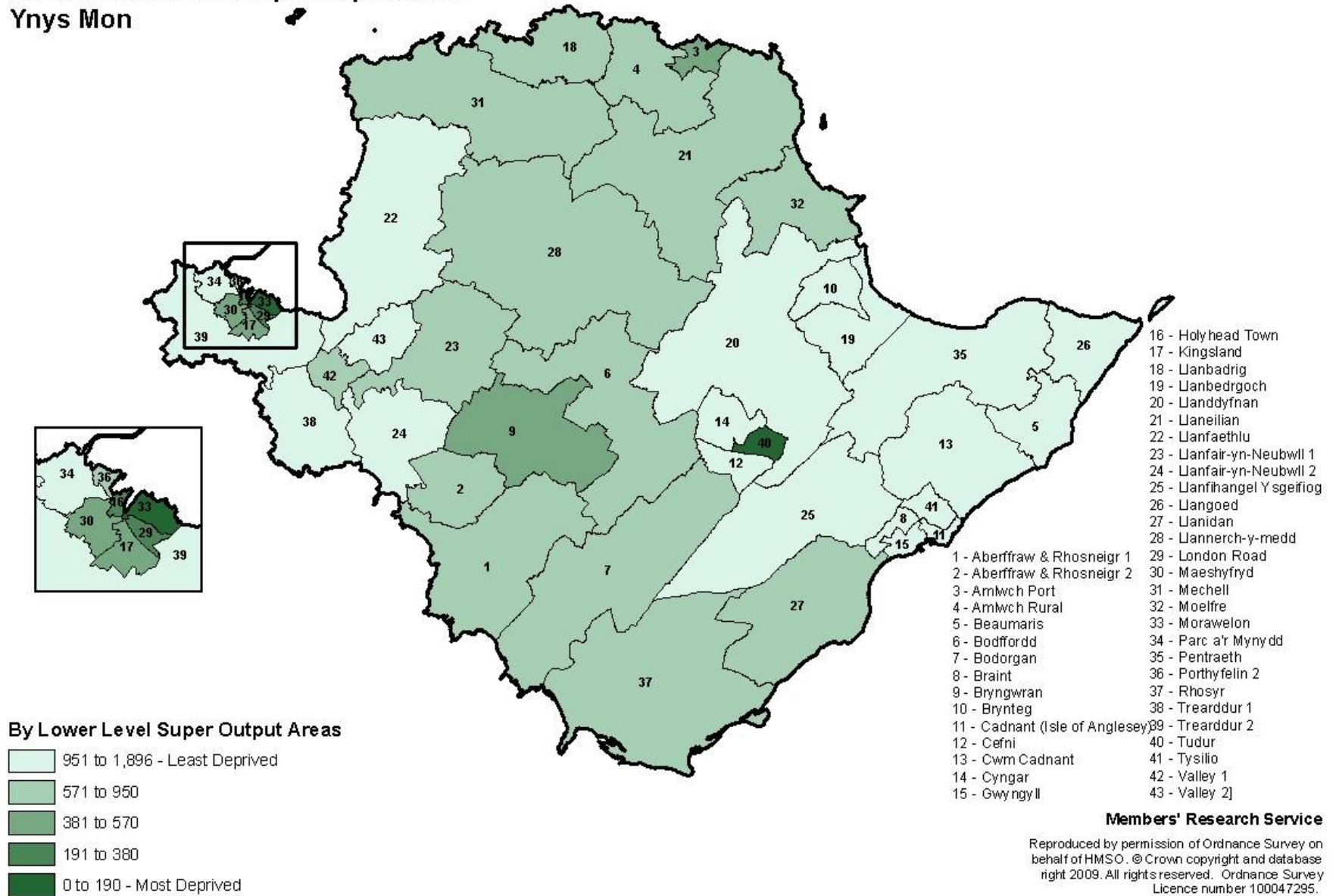
In the 2008 WIMD child index, 5 per cent of LSOAs in Ynys Môn fall within the 10% most deprived LSOAs in Wales and 59 per cent fall within the more deprived half of Wales.

² Welsh Government [WIMD 2008](#) web pages [accessed 19 April 2010]

³ See [Sources and notes](#), notes 5a and 5b.

Figure 2

Overall Index of Multiple Deprivation Ynys Mon



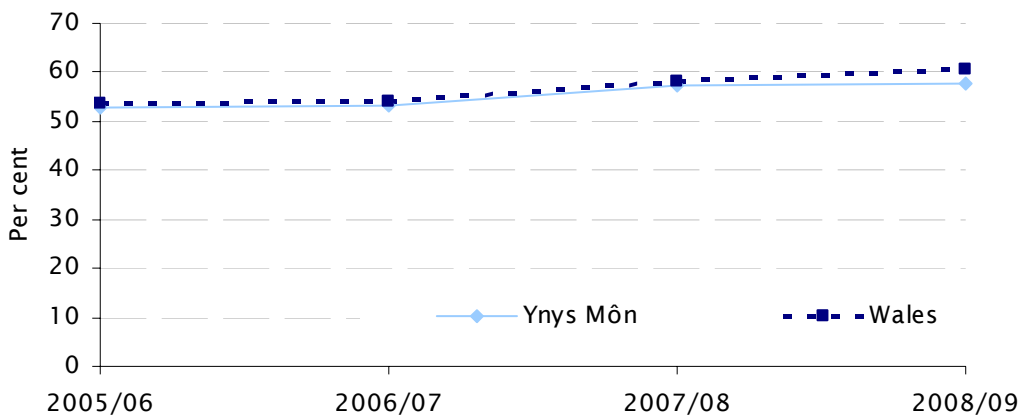
6. Comparisons with earlier years

For the **majority of indicators** presented in this paper it is **not possible to show trends** for the following reasons. Constituencies do not form a standard statistical geography, so the availability of data at this level is limited. Also, the current constituencies were only introduced in 2007.

Qualifications of 15 year olds and Jobseeker's Allowance

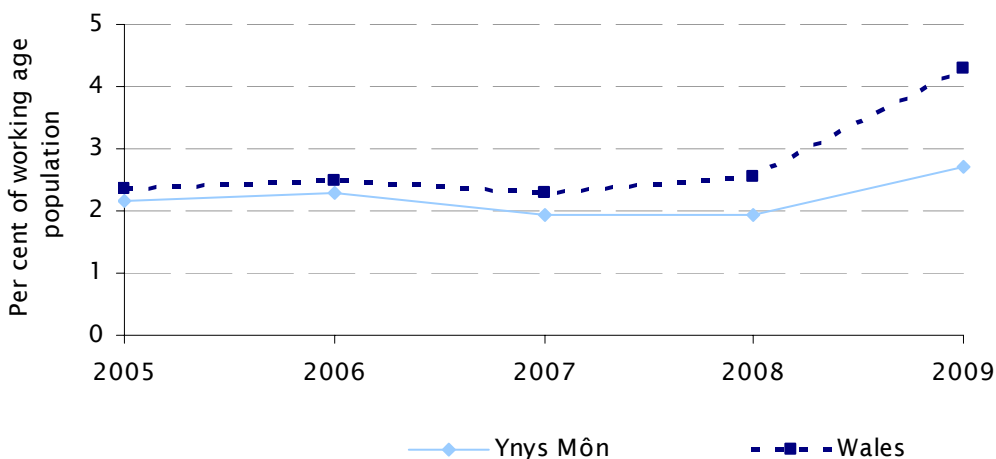
Trend data are publicly available for school statistics and Jobseeker's Allowance claimants. The charts below show trends for qualifications of 15 year olds and Jobseeker's Allowance claimants.

Figure 3: Percentage of 15 year old pupils achieving 5 or more GCSEs grade A*-C or equivalent in Ynys Môn and Wales



Source: Welsh Government Publication "School Statistics by Assembly Constituency and Region": [2009](#), [2008](#), [2007](#) and [2006](#).

Figure 4: Jobseeker's Allowance claimants, Ynys Môn and Wales (a)



Source: StatsWales table [014265](#)

(a) These figures are based on annual averages for each year and will therefore differ to monthly figures shown in table 2 and other publications by Members' Research Service.

7. Sources and notes

Sources for further information

Since electoral geographies do not form a standard statistical geography, and the areas covered are small, the **availability of robust data at constituency level is limited**. A variety of sources have been used in compiling the statistics presented in this paper.

Many of the statistics have been supplied on request by the Statistical Directorate of the Welsh Government, the Office for National Statistics (ONS) and the Department for Work and Pensions (DWP). This is because, until recently, DWP and ONS constituency data available in the public domain were presented on the basis of the Westminster Parliamentary constituencies used in the 2005 UK General Election. The Assembly constituencies, which took effect in 2007, differ from the 2005 Westminster constituencies. However, the constituencies used in the 2010 General Election are the same as the Assembly constituencies.

Links to further information

The links below provide information about the data sources used in this paper and further statistics relating to Wales.

- [Statistical Directorate](#) of the Welsh Government
- [Office for National Statistics](#) (ONS)
- [Department for Work and Pensions](#) (DWP)
- [NOMIS](#) – the website for official labour market statistics
- [Neighbourhood Statistics](#)
- [Local Government Data Unit ~ Wales](#)

Notes and definitions

1: Population statistics

1a	<p>These statistics have been calculated from mid-year population estimates (for 2001 and 2007) provided by the Office for National Statistics (ONS). Information about the ONS small area population estimates project can be found on the small area population estimates pages of the Office for National Statistics website.</p>
1b	<p>The population density has been calculated from mid-2007 population estimates (see note 1a), and area measurements compiled from Census 2001 statistics (see note 1d). Area measurements are based on the 2001 version of the Ordnance Survey Boundary-Line data-set, amended where district boundaries have changed since 2001, and do not include inland water.</p>
1c	<p>Working age is 16-64 for males, 16-59 for females, and retirement age is 65+ for males, 60+ for females.</p>
1d	<p>These statistics have been aggregated from Census 2001 Key Statistics for electoral divisions, using SASPAC (software specifically written for the analysis and interrogation of datasets derived from the Census of Population).</p> <p>In general, there may be occasional small discrepancies between counts or percentages shown in Census tables from different sources. This is usually because cells in Census tables are randomly adjusted to avoid the release of confidential data.</p> <p>General information about the Census can be found on the Census area of the ONS website. Census 2001 Definitions, published by the ONS, includes a glossary of terms.</p>
1e	<p>A 'communal establishment' is defined as an establishment providing managed residential accommodation, where 'managed' means full-time or part-time supervision of the accommodation.</p>
1f	<p>'Non-white ethnic group' includes people from a mixed white-other ethnic group.</p>
1g	<p>A 'migrant' is a person with a different address one year before the Census to that on census day.</p>
1h	<p>The EU is as defined on Census day (29 April 2001).</p>

1i	<p>These statistics were provided by the Statistical Directorate of the Welsh Government and have been calculated from the ONS' Annual Population Survey (APS) for 2008. The survey asks those aged 3 and over: "Can you speak Welsh? Yes/No".</p> <p>Further information on the APS can be found on the ONS website.</p> <p>Results should not be compared with those from the 2001 Census. The Annual Population Survey estimates of the proportion of people with Welsh language skills are higher than the respective Census estimates. For further information, please see the ONS report Differences in estimates of Welsh Language Skills.</p>
1j	<p>Results shown are for the constituency ballot at the 2007 National Assembly for Wales election. Therefore, results for the winning party and share of the vote for Wales and the region are not shown.</p>
1k	<p>Published by the Welsh Government.</p> <p>The number of people who were registered on the electoral roll and were therefore entitled to vote, as at 1 December 2008. It is based on the qualifying date of 15 October 2008. If there had been an election on 1 December 2008 then those who registered after 15 October would not be eligible to vote. Note that entitlement to vote is different for Assembly and Parliamentary elections. EU citizens resident in Wales are entitled to vote at National Assembly for Wales (and local government elections) but not at Parliamentary elections.</p>
1l	<p>ONS, UK Electoral Statistics 2008 (Table 2b).</p> <p>The figures are derived from data supplied to the ONS by Electoral Registration Officers and show the number of people who on 1 December 2008 were registered to vote in parliamentary elections in the UK. It is based on the qualifying date of 15 October 2008. If there had been an election on 1 December 2008 then those who registered after 15 October 2008 would not be eligible to vote. The total number of parliamentary electors is residential qualifiers which includes overseas electors. Overseas electors are not resident in the United Kingdom, but must previously have been resident here and included in the electoral register (unless they were too young to register). They are registered in the same parliamentary constituency as before they went abroad. The residence qualification requires a person to be normally living at the address on the qualifying date even if temporarily absent. People having more than one place of residence, such as students, may therefore be included on more than one register, but they are only entitled to vote in one constituency in a general election.</p>

2: Economic and labour market statistics

2a	See note 1 d.
2b	<p>These statistics were provided by the Statistical Directorate of the Welsh Government and have been calculated from the ONS's Annual Population Survey (APS) for 2008. They show rates of working age people 'in employment' and 'economically inactive (excluding students)'. Rates of unemployment are not shown due to the small sample sizes involved (at constituency level), and since alternative statistics on Jobseeker's Allowance claimants are provided.</p> <p>Further information on the APS can be found on the ONS website.</p>
2c	<p>These statistics were provided by the Statistical Directorate of the Welsh Government and have been calculated from the ONS's Annual Survey of Hours and Earnings (ASHE). The statistics are based on the location of workplace and show the mean gross weekly earnings for full-time employees on adult rates whose pay for the survey pay-period was not affected by absence. A three year average (2006 to 2008) has been used due to the volatility of the estimates at constituency level.</p> <p>Further information on the ASHE can be found on the ONS website.</p>
2d	<p>These statistics are derived from monthly data, as at February 2010, on NOMIS (the website for official labour market statistics). Rates have been calculated using the 2007 mid-year population estimates.</p> <p>The claimant count is not the official measure of unemployment but it is the only indicative statistic available for areas smaller than local authorities.</p> <p>The claimant count differs from the International Labour Organisation (ILO) unemployment measure. The ILO is a more encompassing measure of unemployment because the claimant count excludes those who are unemployed who are not eligible to claim and those who do not wish to claim.</p> <p>Claimant count rates are presented as the percentage of the working age population and will therefore differ to figures based on the percentage of the economically active population aged 16 and over.</p>
2e	<p>These statistics were provided by the Department for Work and Pensions (DWP) and have been calculated from the Work and Pensions Longitudinal Study. Counts of claimants or beneficiaries for August 2008 were provided (rounded to the nearest ten), and rates have been derived using the 2007 mid-year population estimates, unless otherwise stated. See the DWP website for further information on statistics produced by the DWP.</p>

2f	Includes those receiving Incapacity Benefit or Severe Disablement Allowance. Incapacity Benefit is paid to people who are assessed as being incapable of work and who meet certain contribution conditions. Until April 2001, people who were incapable of work and did not satisfy the contribution conditions for Incapacity Benefit could get Severe Disablement Allowance.
2g	Disability Living Allowance is a tax-free benefit for children and adults (under 65) who need help with personal care or have walking difficulties because they are physically or mentally disabled.
2h	Income Support is a benefit to provide assistance to households whose income is not enough to cover their basic needs. The rates shown here are calculated using Census 2001 estimates of numbers of households (see note 1d).
2i	Pension Credit is designed to help pensioners at the lower end of the income scale by ensuring a guaranteed minimum weekly income (guaranteed credit) and, in addition, to reward those people who have made modest provision for their retirement (savings credit). Both parts are based on people's income and other circumstances. Pension Credit is claimed on a household basis and therefore the number of people that Pension Credit helps ('beneficiaries') is the number of claimants in addition to the number of partners for whom they are also claiming.

3: Education statistics

3a	<p>These statistics were provided by the Statistical Directorate of the Welsh Government and have been calculated from the ONS' Annual Population Survey (APS) for 2007. The statistics show the percentage of working age adults qualified at each National Qualification Framework (NQF) level. See DirectGov for more information on NQF levels.</p> <p>Further information on the APS can be found on the ONS website.</p>
3b	<p>These statistics were published by the Welsh Government in their statistical publication "School Statistics by Assembly Constituency and Region, 2009" (SB6/2010). Data for constituencies and regions relates to pupils at LEA maintained schools only. The data have been produced from the National Curriculum Assessments Database. The core subject indicator represents the percentage of pupils achieving the expected level or above in English or Welsh First Language, mathematics and science in combination.</p> <p>See the Statistical Directorate's webpages for further information on school statistics and the data sources used here.</p>

3c	Twenty-three maintained primary schools currently piloting the Foundation Phase were not required to provide Key Stage 1 results.
3d	These statistics were published by the Welsh Government in their statistical publication " School Statistics by Assembly Constituency and Region, 2009 " (SB6/2010). Data for constituencies and regions relates to pupils at Local Education Authority maintained schools only. Data are derived from the Welsh Government's School Examination Performance Information. Core subjects are English or Welsh, Maths and Science. For an explanation of the calculation of points scores, please refer to the Glossary in " Schools in Wales: Examination Performance, 2008 ".
3e	These statistics were provided by the Statistical Directorate of the Welsh Government. The percentage of 15-year-old pupils leaving full-time education with no recognised qualification is defined by the Welsh Government's performance indicator EDU/002. Please refer to " Pupils Leaving Education with No Qualifications, 2008/09 " for definitions and key quality Information.
3f	These statistics were published by the Welsh Government in their statistical publication " School Statistics by Assembly Constituency and Region, 2009 " (SB6/2010). Data for constituencies and regions relates to full-time pupils at LEA maintained schools only. Data are derived from the Welsh government's School Examination Performance Information. The percentage relates to pupils entering a volume equivalent to 2 A levels. For an explanation of the calculation of points scores, please refer to the Glossary in " Schools in Wales: Examination Performance, 2008 ".
3g	These statistics were published by the Welsh Government in their statistical publication " School Statistics by Assembly Constituency and Region, 2009 " (SB6/2010). Please refer to " Absenteeism from Secondary Schools, 2008/09 " for definitions and key quality information.
3h	These statistics were published by the Welsh Government in their statistical publication " School Statistics by Assembly Constituency and Region, 2009 " (SB6/2010)". The 'within school' definition of pupil teacher ratio has been given and full time equivalent numbers for pupils and teachers have been used. Please refer to "Appendix III - Glossary and Notes" of " Schools in Wales: General Statistics, 2009 " for further information and definitions.
3i	These statistics were published by the Welsh Government in their statistical publication " School Statistics by Assembly Constituency and Region, 2009 " (SB6/2010)" and derived from the Pupil Level Annual School Census (PLASC).

4: Health, housing and transport statistics

4a	These statistics were provided by the Statistical Directorate of the Welsh Government and have been produced from the Welsh Health Survey (WHS). Four years of survey data (2003/04 to 2007) have been combined to increase the sample size used and improve the precision of the estimates. The percentages shown are based on adults aged 16+ and are observed percentages, that is, they are not adjusted for the different age profiles of different areas. See WHS reports & webpages for full details & definitions.
4b	Currently being treated for illness.
4c	Based on heaviest drinking day in past week and based on all adults (drinkers and non-drinkers). Drinking above guidelines is men drinking more than 4 units and women more than 3 units; binge drinking are double the daily limits (i.e. men drinking more than 8 units, women more than 6 units).
4d	Overweight and obesity is defined using the Body Mass Index (BMI). Overweight is a BMI of 25+. Obesity is BMI of 30+.
4e	These statistics were provided by Dental Services, NHS Business Services Authority. The figures are based on the number of patients living in Wales who have visited an NHS dentist in Wales in the 24 months ending 31 March 2009. Patients can appear in more than one constituency if they have moved locations within the time period. The rates have been calculated using 2007 mid-year estimates (see note 1a). Please refer to the statistical publication " NHS Dental Statistics 2008-09 " (SDR 122/2009) for further information and definitions.
4f	These statistics have been aggregated from Census 2001 Key Statistics. See note 1d.
4g	A household comprises one person living alone, or a group of people living at the same address with common housekeeping (sharing a living room/sitting room or at least one meal a day). 'Total households' refers to households with residents; 'total household spaces' to households with or without residents.
4h	A dependent child is a person aged 0-15 in a household (whether or not in a family) or a person aged 16-18 who is a full-time student in a family with parent(s).
4i	A household is counted as 'overcrowded' if its occupancy rating is -1 or less (implying there is one room too few). The occupancy rating assumes that every household, including one person households, requires a minimum of two common rooms (excluding bathrooms).

4j	<p>These statistics were provided by the Statistical Directorate of the Welsh Government and have been calculated from the ONS' Annual Population Survey (APS) for 2006. The question on access to a vehicle is not asked every year.</p> <p>Further information on the APS can be found on the ONS website.</p>
4k	<p>These statistics were provided by the Statistical Directorate of the Welsh Government and have been calculated from the ONS' Annual Population Survey (APS) for 2008. The figures relate to the percentage of people in employment who usually travel to work as a driver or passenger in a car, van, minibuss or work van. The question on travelling to work is not asked every year.</p> <p>Further information on the APS can be found on the ONS website.</p>

5. Deprivation statistics

5a	<p>The Welsh Index of Multiple Deprivation (WIMD) is published by the Welsh Government, and is the official measure of deprivation in small areas in Wales. It is a relative measure of concentrations of deprivation at the small area level. The statistics used in these calculations were compiled from WIMD data in StatsWales table 006028.</p> <p>The index can be used for:</p> <ul style="list-style-type: none"> ▪ giving a deprivation score for each of the 1,896 small areas in Wales; ▪ ranking the scores for all 1,896 areas, so that the areas can be put in order from the most deprived to the least; and ▪ comparing the scores of two different areas to see if one is more deprived (but you can't tell by how much). <p>Ways the index cannot be used:</p> <ul style="list-style-type: none"> ▪ You can't say how much more deprived one area is than another. If area A has a score of 40 and area B one of 20, it does not follow that A is twice as deprived as B. ▪ It is an index of deprivation not affluence. If one area is much lower down the ranked list than another then you can say that it is less deprived but you can't say it is more affluent. <p>The child index data were compiled from data in StatsWales table 006505. For more details on the Index please see the WIMD web pages.</p>
5b	<p>There is a single LSOA (W01000086: Llanllyfni & Clynnog) which extends into two assembly constituencies and regions: Arfon (in North Wales) and Dwyfor Meirionnydd (in Mid and West Wales). In the analysis, this LSOA has been counted in the statistics for both of the constituencies or regions.</p>

