

# **What to expect when you visit the National Assembly for Wales**

**A guide for people with autism**

**October 2014**

**This is an Easy Read version of the National  
Assembly for Wales leaflet 'Sensory issues for  
people with autism'**



**Cynulliad  
Cenedlaethol  
Cymru**

**National  
Assembly for  
Wales**



## How to use this document

This is an Easy Read version. The words and their meaning are easy to read and understand.



You may need help and support to read and understand this document. Ask someone you know to help you.

Some words may be difficult to understand. These are in **bold blue writing** and have been explained in a box beneath the word.

If any of the words are used later in the booklet they are shown in **normal blue writing**. If you see words in **normal blue writing**, you can look up what they mean in **Hard words** on page 14.



Where the document says 'we', this means the National Assembly.

If you would like a version in large print, Braille, audio tape or another language please contact:



Assembly Booking and Information Service  
National Assembly for Wales  
North Wales Visitor Centre, Princes Park  
Princes Drive, Colwyn Bay, Conwy, LL29 8PL



Phone: 0845 010 5500 or 01492 523200

Email: [assembly.info@wales.gov.uk](mailto:assembly.info@wales.gov.uk)

Website: <http://www.assemblywales.org>



This document was made into Easy Read by Learning Disability Wales using Photosymbols 5.

# Contents

Page

<b>Introduction: Your visit to the National Assembly for Wales.....</b>	<b>4</b>
▪ About the National Assembly for Wales .....	5
▪ Our buildings .....	6
<b>What will happen when you arrive.....</b>	<b>7</b>
<b>What you may see, hear, smell and touch at the National Assembly for Wales.....</b>	<b>9</b>
▪ What you may see .....	9
▪ What you may hear .....	10
▪ What you may smell .....	12
▪ What you may touch.....	12
<b>If you need to rest.....</b>	<b>13</b>
<b>More information .....</b>	<b>13</b>
<b>Hard words .....</b>	<b>14</b>



# Introduction: Your visit to the National Assembly for Wales

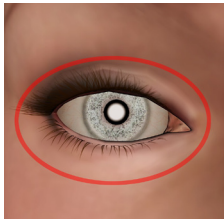
We want you to have a good time when you visit the National Assembly for Wales.



We want to make sure you are happy and calm. We want to make sure that nothing upsets you.

This guide is about what you can expect when you visit our buildings.

There are:



- things you may see



- things you may hear



- things you may smell



- things you may touch.

Some of these things may be new to you.

# About the National Assembly for Wales



The National Assembly is a group of 60 people from different parts of Wales.



These people are called **Assembly Members**. Their job is to speak up for the people in their part of Wales, and help them with what they need.



## Assembly Members:

- stand up for what is important to the people of wales



- make new laws for Wales



Llywodraeth Cymru  
Welsh Government

- make sure the Welsh Government is doing what it should do.

# Our buildings

The National Assembly for Wales has 3 buildings:



- **The Senedd.** This is where Assembly Members make laws, and talk about the things that affect people in Wales.



- **Tŷ Hywel.** This is where Assembly Members and their staff have their offices.



- **The Pierhead Building.** This is where we hold some of our events.

# What will happen when you arrive

At the **Senedd** and **Tŷ Hywel** buildings we have security.



When you first get to the **Senedd** or **Tŷ Hywel**, you will have to go through a security check.

You will be asked to empty your pockets into a tray.



You will be asked to take off your coat, and put your bag through a scanner.

Your coat, bag, and the things that were in your pocket, will be given back to you after the security checks.



You are not allowed to bring in anything dangerous - like guns, knives or scissors.

If you bring something dangerous with you, it will be taken off you. You may not be get it back.



After this, you will walk through an arch. The arch will beep if you have anything that is metal on you.

If you have autism, you can ask for the beep to be switched off.



If the arch beeps when you walk through it, a security officer will check what set off the beep with a hand held **detector**.

A **detector** is a machine we use to find something, like metal.

The security officer will move the **detector** around your body. It should not touch you.



# What you may see, hear, smell and touch at the National Assembly for Wales

## What you may see



If you look over one of our balconies, you may feel dizzy because of how high the balcony is.



There may be bright lights in some rooms. Some rooms can be very dark. The light can change while you are in a room.

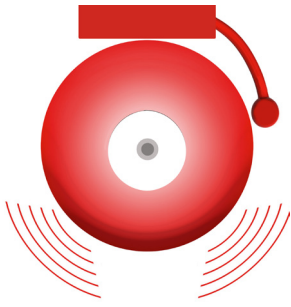


You may see paintings on the wall. You are not allowed to touch the paintings.



You may see signs for **loop systems**. These are for people who are deaf and use a hearing aid.

A **loop system** is a special type of sound system to help people with hearing aids hear more clearly.



## What you may hear

The **Call to Plenary bell**.

This is the bell that tells Assembly Members to go to the **Siambwr**.

The **Siambwr** is the name of the room where Assembly Members meet.



The **Call to Plenary bell** only goes off in the **Senedd**. It is very loud. You can hear what it sounds like on the National Assembly for Wales website: <http://www.assembly.wales/en/visiting/Pages/Visitors-autism.aspx>.



The **Call to Plenary bell** goes off at 1:25pm and 1:30pm. You can plan your visit around these times if you want to.



The fire alarm. We test the fire alarms every week. You can plan your visit around this if you want to:



- At the **Senedd** we test the fire alarms every Monday, Tuesday and Wednesday at 8:45am.



- At the **Pierhead Building** we test the fire alarms every Monday at 9:30am.



- At **Tŷ Hywel** we test the fire alarms every Monday at 9:00.



The sound of building work - like drilling.



The noise from an event or an activity being held at one of the buildings.



Noise from TVs.

In some places, we may play a film or a sound track which can be loud.



Food trolleys. The noise of the food trolley wheels on the floor is very loud in the **Senedd**.



In the **Senedd** the blinds open **automatically** and this makes a noise.

**Automatically** means moving by itself.



The hand dryers in the toilets are very loud.



In our lifts we have an **automatic** voice which tells you which floor you are on.

## What you may smell



You may smell paint if there is somewhere in the building being painted.



You may smell cleaning products.



You may smell food in some places.

## What you may touch



You may shake hands with someone. If you do not like shaking hands, please let a member of staff know.

## If you need to rest



If you need to go somewhere quiet, please ask a member of staff. They will show you to the quiet room.



You can sit and rest in the quiet room until you feel better.

## More information



If you would like more information about what will be happening on the day of your visit please phone or email us.

We can arrange for you to visit at a quiet time. We can also help you with other things that will make your visit easier.



Phone us on **0845 010 5500** or **01492 523200**



Email us at [assembly.info@wales.gov.uk](mailto:assembly.info@wales.gov.uk)

# Hard words

## Automatically

Automatically means moving by itself.

## Call to Plenary bell

The Call to Plenary bell tells all the Assembly Members to go to the Siambr. The Siambr is the name of the room where all the Assembly Members meet.

The Call to Plenary bell only goes off in the Senedd. You can hear what it sounds like on the National Assembly for Wales' website: <http://www.assembly.wales/en/visiting/Pages/Visitors-autism.aspx>.

It goes off at 1:25pm and 1:30pm. You can plan your visit around these times if you want to.

## Detector

A detector is a machine we use to find something - like metal.

## Loop system

A loop system is a special type of sound system to help people with hearing aids, hear more clearly.

## Siambr

The Siambr is the name of the room where Assembly Members meet.